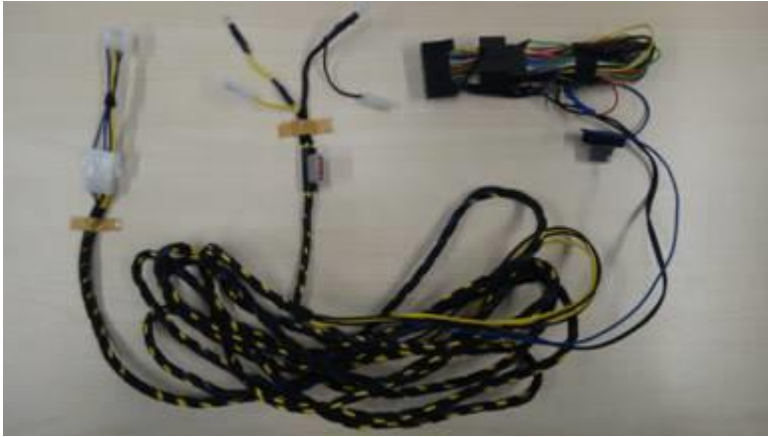




**Ford Fiesta VI**  
**Ford Focus II**  
Subwoofer Installation  
Manual

**Pioneer**



Plug'n Play subwoofer connection cable.

CA-AW-SUB-FOR.001



### Ford Fiesta

Remove the following parts using the correct tools :

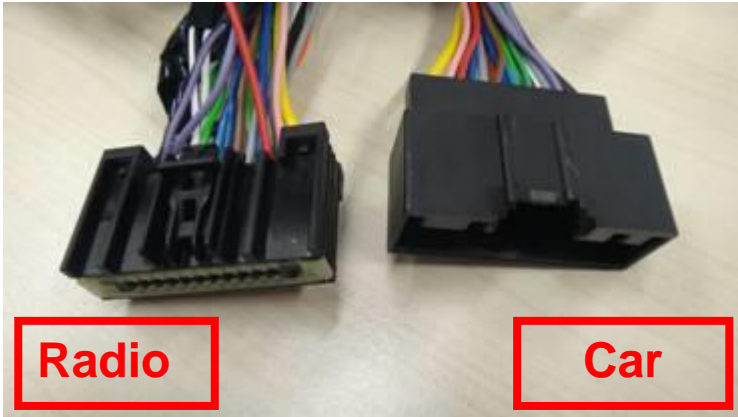
- Info display surrounding
- Radio (2 screws & 2 bolts)
- Gearshift surrounding
- Right dashboard trim
- Right door sill



### Ford Focus

Remove the following parts using the correct tools :

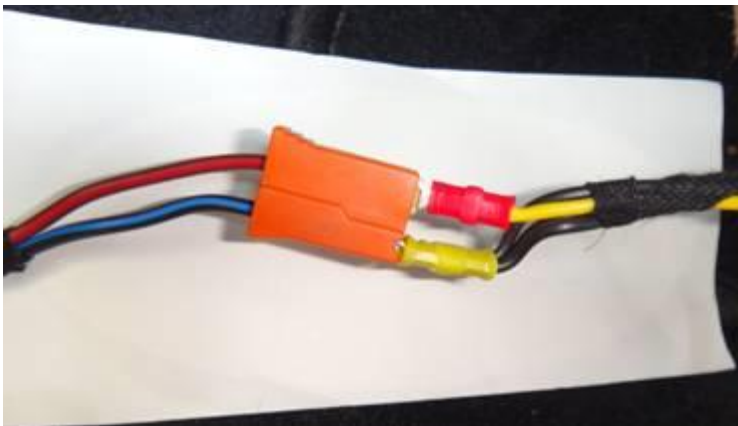
- Radio (2 screws @ bottom)
- Gearshift surrounding
- Glove box
- Cup holders center console
- Right door sill



Connect this piece of the cable between the OEM radio and the car connector.



Route the power cable to the 12volt plug in the center console via the removed side panel.



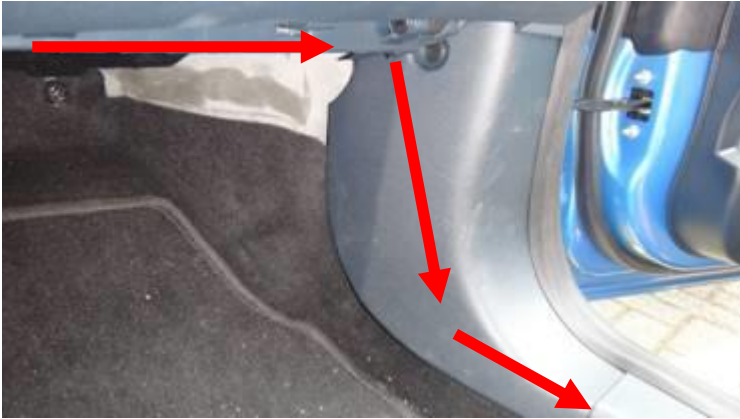
Undo the 12volt plug and connect to the power terminals. Then make the second connection back to the 12volt plug.

Yellow cable = brown/red  
Black cable = blue/black



**Remote control**

Take the remote control and put it in the glove box. Route the cable from there behind the glove box, where it meets the subwoofer cable.



Route the cables behind the panels as marked with the red arrows.

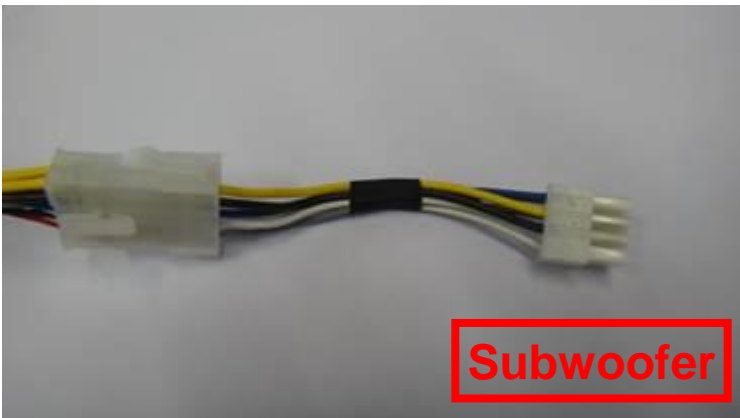
Remark :

If necessary, tape the cables to the original wires to prevent noise.



Route the cables behind the panels as marked with the red arrows.

Route the cable underneath the carpet through the first hole for a clean and neat finish.



Connect this terminal, as well as the terminal from the remote to the Subwoofer.



Mount the subwoofer using the supplied velcro patch and secure the cable with the metal brace (2 screws).

Put the subwoofer under the passenger seat.