

CA-HM-SUB.005

SUBARU

OUTBACK 2015->

Compatible with double DIN devices



Double DIN Kit content

Facia Plate
Mounting Brackets + Screws



Mount the unit with the screws and verify the proper functioning of the system.



Reassemble, in reverse order, using parts saved before (white clips) and mount the facia plate provided. This is the final result.

Installation Manual Double DIN Kit



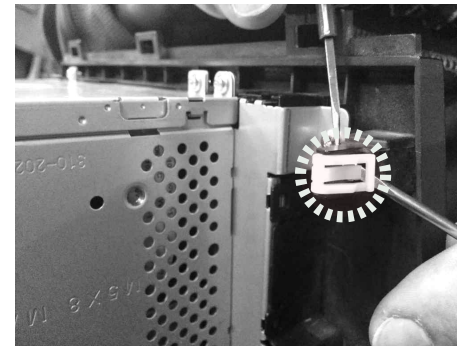
Carefully remove the silver plastic cover of the clima controls.



Unscrew the four screws of the original OEM shown in the picture and remove it.



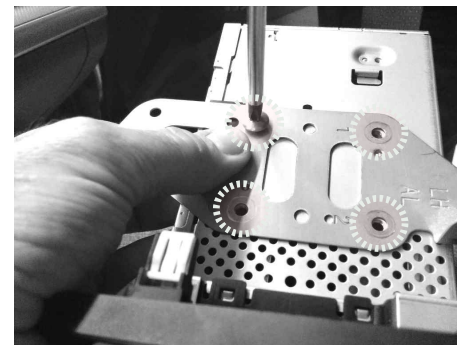
Unscrew the two screws shown in the picture and remove the clima controls panel.



Remove and save the white clips shown in the picture.



Carefully remove the air vents panel.



Mount the brackets on the aftermarket unit with the screws supplied.