

Facia plate installation kit for:

# TOYOTA

**Model:** Toyota Yaris

**Year:** 2020 >

**Kit content:** Double DIN facia plate; mounting brackets and screws

**Customer code:** CA-HM-TOY.010



## INSTALLATION MANUAL

All installation work must be performed by a qualified professional installer only. The manufacturer / dealer is not liable for any kind of incidental or indirect damages. 07/2022 ALL RIGHTS RESERVED. Technical changes possible. No liability for misprints.

## Procedure for removing the original radio:

This is what the OEM radio looks like.

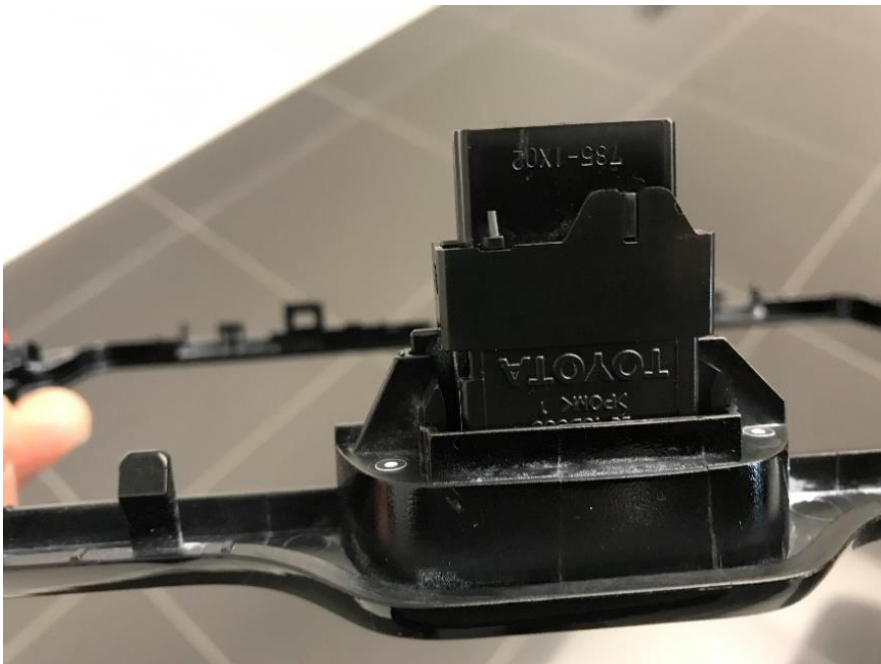


A. Use the shovel to remove the front plastic frame.





**B.** Disconnect and remove the hazard lights button and save them for the next steps.



**C. Remove the air vents underneath.**



**D. Unscrew the 4 screws (that are uncovered in step B. there are 2 on each side), save them for the next steps.**

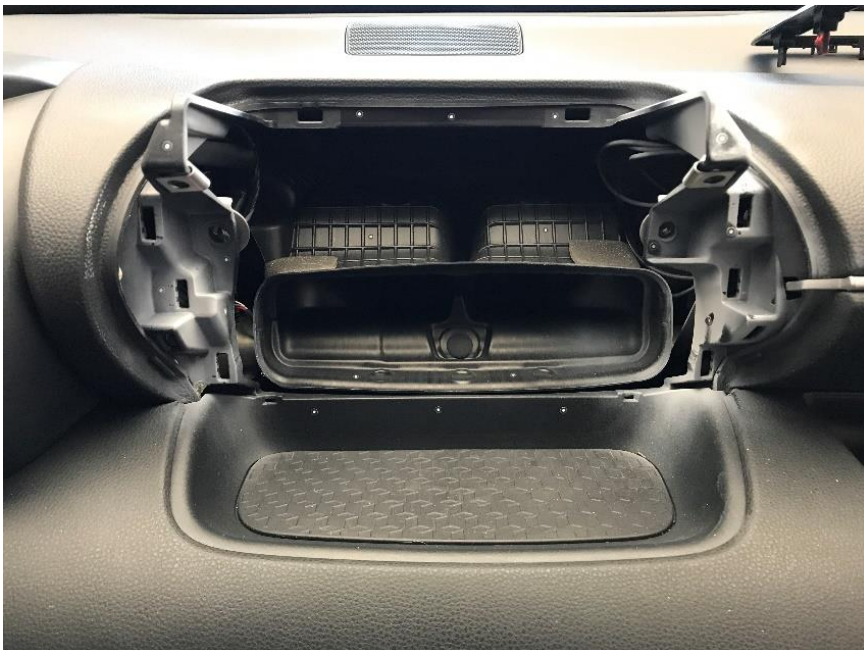




**E.** Remove the rear cover of the radio and remove the orange clips, save them for the next steps.



**F.** Remove the radio from its housing.



## Installation procedure for new radio:

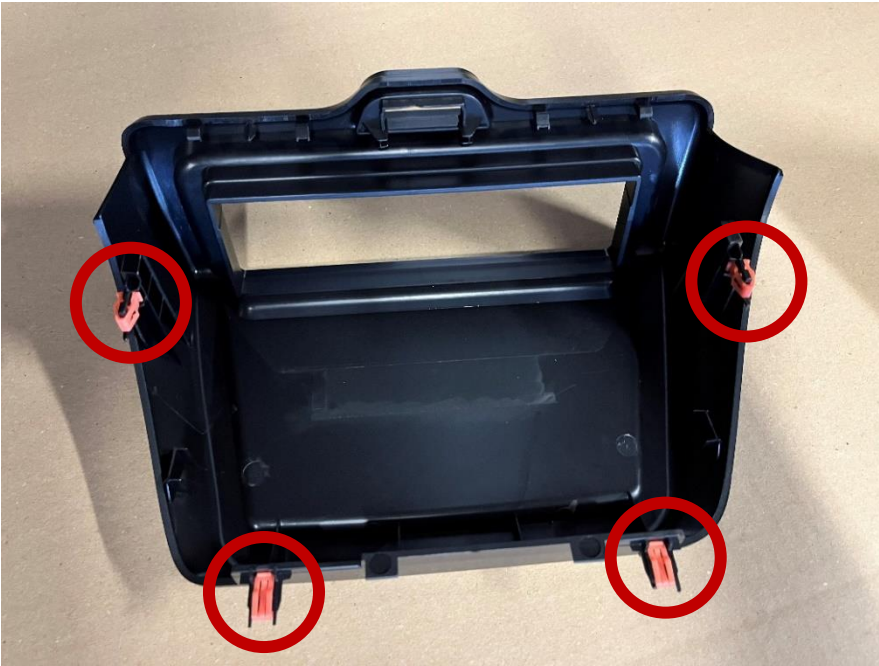
1. Place the brackets to the new radio with the screws contained in the kit, use the required quantity and the correct type depending on the radio to be mounted (Screws of types A or B, see image on front page).



2. Insert the radio into the dashboard slot, using the screws (previously unscrewed in step E. there are 2 on each side), so that the brackets are screwed into the dashboard



3. Insert the orange clips (previously unscrewed in step F.) from the faceplate contained in the kit.



4. Connect the switch used for the hazard lights and insert the button into the faceplate contained in the kit.





5. Apply the faceplate contained in the kit into the dashboard slot.  
This is the final result.

