

## VREC-200CH – Battery Replacement

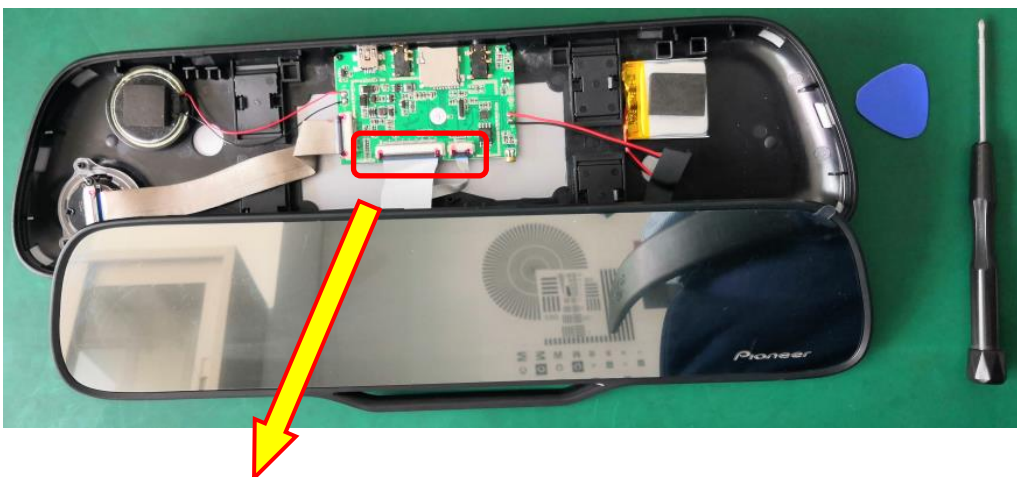
1. Using a Phillips screwdriver, remove the screws in the screw holes

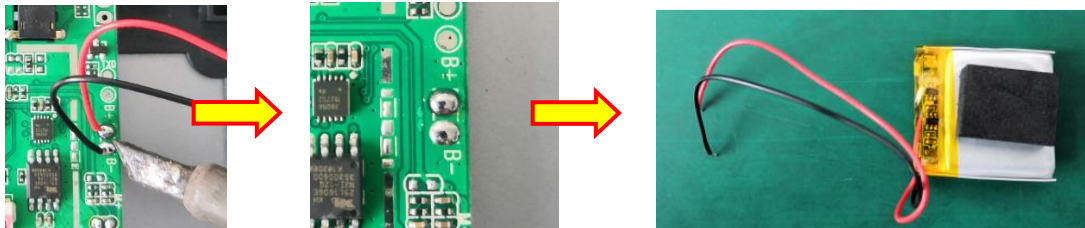
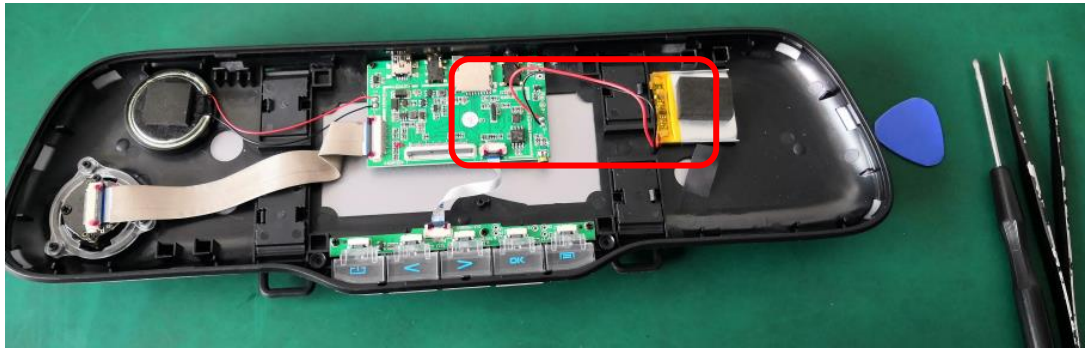


2. Use a sharp but low hardness disassembly blade and disassemble the product along the frame gap shown in the picture above



3. In order to prevent the glass lens and screen from being damaged during the battery removal process, remove the glass lens and screen first;





4. Find the location of the battery show in the picture above, use a constant temperature soldering iron, and remove the battery;
5. The process of removing the battery: first remove the black wire with a constant temperature soldering iron, then remove the red wire, and finally remove the battery.



6. The above is the entire process of battery removal. The installation steps after battery replacement are the same as the removal steps, but the order needs to be reversed.

## Contact Information

Pioneer Customer Support Center  
<http://www.pioneer.eu>

---

Copyright(c) 2021 Pioneer Corporation