

DVD RDS AV RECEIVER
 AUTORADIO AV RDS LECTEUR DE DVD
 SINTOLETTORE DVD RDS CON AV
 RADIO AV RDS CON DVD
 DVD-RDS-AV-EMPFÄNGER
 DVD RDS AV-ONTVANGER

AVH-A200BT AVH-A100DVD

Quick start guide
 Guide de démarrage rapide
 Guida rapida all'uso
 Guía de iniciación rápida
 Schnellstartanleitung
 Snelstartgids



Pioneer CarStereo-Pass

Bitte bei Kauf sofort ausfüllen.
 Please fill out immediately after purchase.

Ingravierte 14-stellige Serien-Nummer:
 Engraved 14-digit serial number:

P	I													
---	---	--	--	--	--	--	--	--	--	--	--	--	--	--

Kaufdatum:
 Date of purchase:

--	--	--	--	--	--

Händler-Stempel
 Dealer's stamp

Le Pioneer CarStereo-Pass est utilisable seulement en Allemagne.

< CRD5021-A >

English
 This guide is intended to guide you through the basic functions of this unit.
 For details, please refer to the Operation manual stored on the CD-ROM.
 Furthermore, manuals are available on the website.
<http://www.pioneer-car.eu>

Français
 Ce guide a pour but de vous présenter les fonctions de base de cet appareil.
 Pour les détails, veuillez vous reporter au mode d'emploi qui se trouve sur le CD-ROM.
 Des manuels supplémentaires sont aussi disponible sur notre site web.
<http://www.pioneer-car.eu>

Italiano
 Questa guida illustra le funzioni principali dell'apparecchio.
 Per informazioni particolareggiate s'invita a consultare il manuale d'uso fornito nel CD-ROM.
 I manuali sono inoltre disponibili presso il sito
<http://www.pioneer-car.eu>

Español
 Se ha diseñado esta guía con la intención de guiarle a través de las funciones básicas de esta unidad.
 Para los detalles, consulte el Manual de instrucciones que se encuentra almacenado en el CD-ROM.
 Además, los manuales están disponibles en el sitio Web.
<http://www.pioneer-car.eu>

Deutsch
 Diese Anleitung führt Sie durch die grundlegenden Funktionen dieses Geräts.
 Einzelheiten finden Sie in der Bedienungsanleitung, die auf der CD-ROM enthalten ist.
 Außerdem sind die Bedienungsanleitungen auch auf unserer Website verfügbar.
<http://www.pioneer-car.eu>

Nederlands
 Deze gids is bedoeld om u bekend te maken met de basisfuncties van dit toestel.
 Raadpleegt u voor details de handleiding op de CD-ROM.
 Handleidingen zijn ook verkrijgbaar op onze website.
<http://www.pioneer-car.eu>

English
 Hereby, Pioneer declares that the radio equipment type [*] is in compliance with Directive 2014/53/EU.
 The full text of the EU declaration of conformity is available at the following internet address: <http://www.pioneer-car.eu/compliance>

Français
 Par la présente, Pioneer déclare que le type d'équipement radioélectrique [*] est conforme à la directive 2014/53/UE.
 Le texte complet de la déclaration UE de conformité est disponible à l'adresse internet suivante: <http://www.pioneer-car.eu/compliance>

Italiano
 Con la presente, Pioneer dichiara che il tipo di apparecchiatura radio [*] è conforme alla direttiva 2014/53/UE.
 Il testo completo della dichiarazione di conformità UE è disponibile al seguente indirizzo Internet: <http://www.pioneer-car.eu/compliance>

Español
 Por la presente, Pioneer declara que el tipo de equipo radioeléctrico [*] es conforme con la Directiva 2014/53/UE.
 El texto completo de la declaración UE de conformidad está disponible en la dirección Internet siguiente: <http://www.pioneer-car.eu/compliance>

Deutsch
 Hierbij verklaar ik, Pioneer, dat het type radioapparatuur [*] conform is met Richtlijn 2014/53/EU.
 De volledige tekst van de EU-conformiteitsverklaring kan worden geraadpleegd op het volgende internetadres: <http://www.pioneer-car.eu/compliance>

Nederlands
 Hierbij verklaar ik, Pioneer, dat het type radioapparatuur [*] conform is met Richtlijn 2014/53/EU.
 De volledige tekst van de EU-conformiteitsverklaring is beschikbaar op de volgende internetadres: <http://www.pioneer-car.eu/compliance>

Ελληνικά:
 Με την παρούσα ο/η Pioneer, δηλώνει ότι ο ραδιοεξοπλισμός [*] πληροί την οδηγία 2014/53/ΕΕ.
 Το πλήρες κείμενο της δήλωσης συμμόρφωσης ΕΕ διατίθεται στην ακόλουθη ιστοσελίδα στο διαδίκτυο: <http://www.pioneer-car.eu/compliance>

Italiano:
 Il fabbricante, Pioneer, dichiara che il tipo di apparecchiatura radio [*] è conforme alla direttiva 2014/53/UE.
 Il testo completo della dichiarazione di conformità UE è disponibile al seguente indirizzo Internet: <http://www.pioneer-car.eu/compliance>

English
 Manufacturer: **Pioneer Corporation**
 28-8, Honkomagome 2-chome, Bunkyo-ku, Tokyo 113-0021, JAPAN

EU Representative's & Importer:
Pioneer Europe NV
 Haven 1087, Keetberglaan 1, 9120 Melsele, Belgium
<http://www.pioneer-car.eu>

English:
 Hereby, Pioneer declares that the radio equipment type [*] is in compliance with Directive 2014/53/EU.
 The full text of the EU declaration of conformity is available at the following internet address: <http://www.pioneer-car.eu/compliance>

Français:
 Par la présente, Pioneer déclare que le type d'équipement radioélectrique [*] est conforme à la directive 2014/53/UE.
 Le texte complet de la déclaration UE de conformité est disponible à l'adresse internet suivante: <http://www.pioneer-car.eu/compliance>

Italiano:
 Con la presente, Pioneer dichiara che il tipo di apparecchiatura radio [*] è conforme alla direttiva 2014/53/UE.
 Il testo completo della dichiarazione di conformità UE è disponibile al seguente indirizzo Internet: <http://www.pioneer-car.eu/compliance>

Español:
 Por la presente, Pioneer declara que el tipo de equipo radioeléctrico [*] es conforme con la Directiva 2014/53/UE.
 El texto completo de la declaración UE de conformidad está disponible en la dirección Internet siguiente: <http://www.pioneer-car.eu/compliance>

Deutsch:
 Hierbij verklaar ik, Pioneer, dat het type radioapparatuur [*] conform is met Richtlijn 2014/53/EU.
 De volledige tekst van de EU-conformiteitsverklaring kan worden geraadpleegd op het volgende internetadres: <http://www.pioneer-car.eu/compliance>

Ελληνικά:
 Με την παρούσα ο/η Pioneer, δηλώνει ότι ο ραδιοεξοπλισμός [*] πληροί την οδηγία 2014/53/ΕΕ.
 Το πλήρες κείμενο της δήλωσης συμμόρφωσης ΕΕ διατίθεται στην ακόλουθη ιστοσελίδα στο διαδίκτυο: <http://www.pioneer-car.eu/compliance>

Italiano:
 Il fabbricante, Pioneer, dichiara che il tipo di apparecchiatura radio [*] è conforme alla direttiva 2014/53/UE.
 Il testo completo della dichiarazione di conformità UE è disponibile al seguente indirizzo Internet: <http://www.pioneer-car.eu/compliance>

Slovensčina:
 Pioneer potrdjuje, da je tip radijske opreme [*] skladen z Direktivo 2014/53/EU.
 Celotno besedilo izjave EU o skladnosti je na voljo na naslednjem spletnem naslovu: <http://www.pioneer-car.eu/compliance>

Română:
 Prin prezenta, Pioneer declară că tipul de echipamente radio [*] este în conformitate cu Directiva 2014/53/UE.
 Textul integral al declarației UE de conformitate este disponibil la următoarea adresă internet: <http://www.pioneer-car.eu/compliance>

Български:
 С настоящото Pioneer декларира, че този тип радиосъоръжение [*] е в съответствие с Директива 2014/53/ЕС.
 Цялостният текст на ЕС декларацията за съответствие може да се намери на следния интернет адрес: <http://www.pioneer-car.eu/compliance>

Polški:
 Pioneer niniejszym oświadcza, że typ urządzenia radiowego [*] jest zgodny z dyrektywą 2014/53/UE.
 Pełny tekst deklaracji zgodności UE jest dostępny pod następującym adresem internetowym: <http://www.pioneer-car.eu/compliance>

Norsk:
 Herved Pioneer erklærer at radioutstyr type [*] er i samsvar med direktiv 2014/53/EU.
 Den fullstendige teksten i EU-samsvarserklæringen er tilgjengelig på følgende internetadresse: <http://www.pioneer-car.eu/compliance>

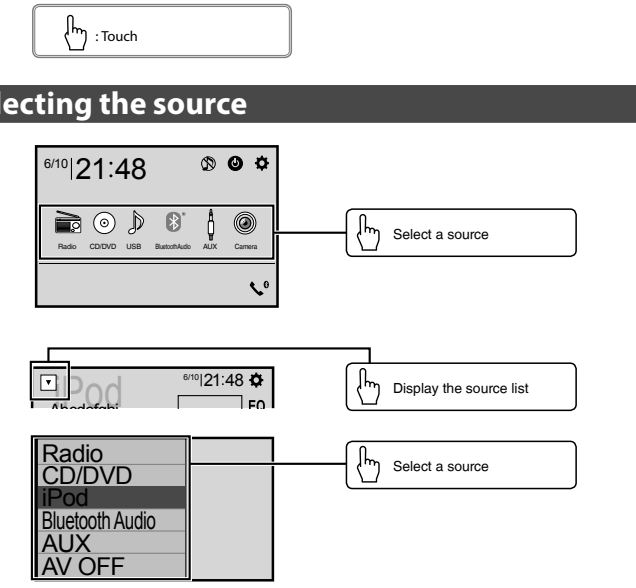
Íslenska:
 Hér með Pioneer lýsir yfir að tegund þráðlausan búnað [*] er í samræmi við tilskipun 2014/53/ESB.
 The fullur texti af ESB-samræmisýrfrýsingu er í boði á eftirfarandi veffangi: <http://www.pioneer-car.eu/compliance>

Hrvatski:
 Pioneer ovime izjavljuje da je radijska oprema tipa [*] u skladu s Direktivom 2014/53/EU.
 Cjeloviti tekst EU izjave o sukladnosti dostupan je na sljedećoj internetskoj adresi: <http://www.pioneer-car.eu/compliance>

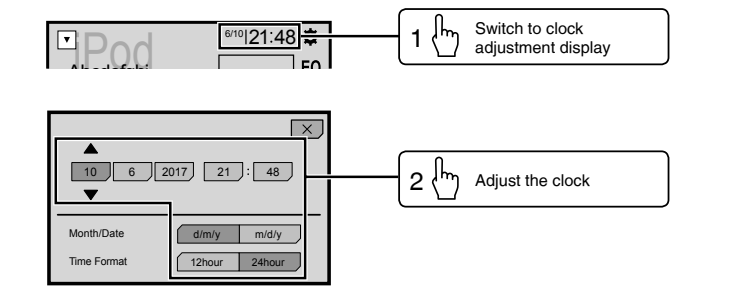
Türk:
 Burada, Pioneer radyo ekipmanı turunun [*] 2014/53/EU direktiflerine uyumlu olduğunu beyan eder.
 Avrupa uyumluluk beyanının tam metni belirtilen internet sitesinde mevcuttur: <http://www.pioneer-car.eu/compliance>

Notepad / Bloc-notes / Appunti / Bloc de notas / Notepad / Notities

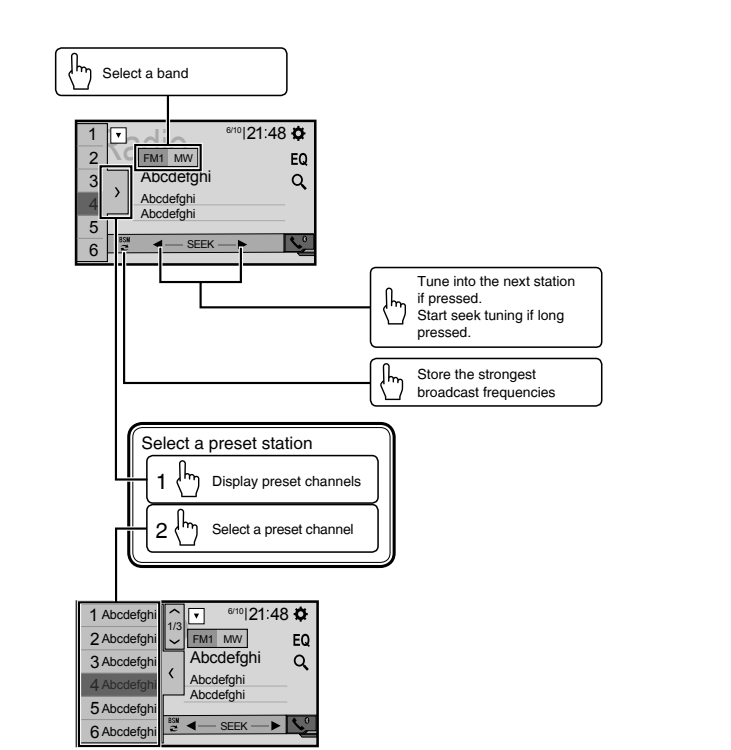
Selecting the source



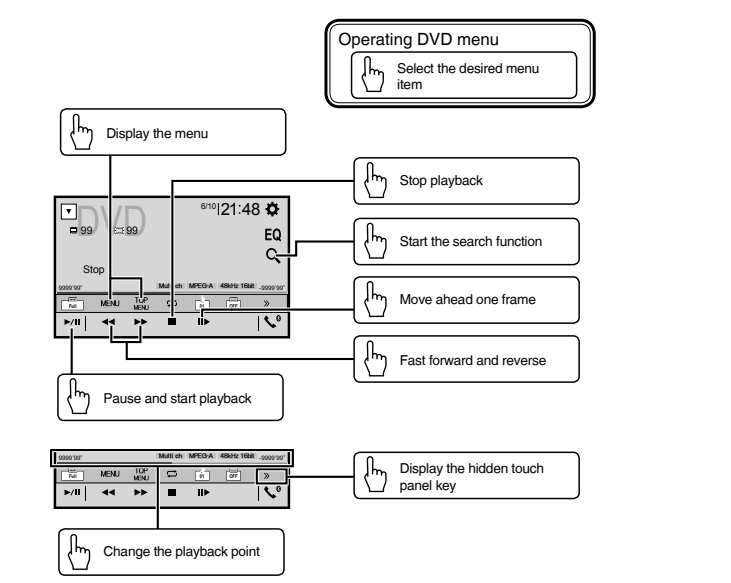
Setting the clock



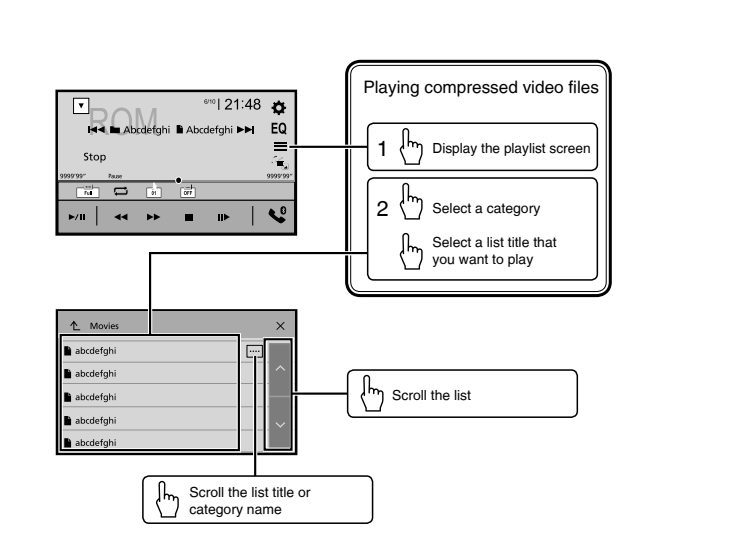
Tuner operation



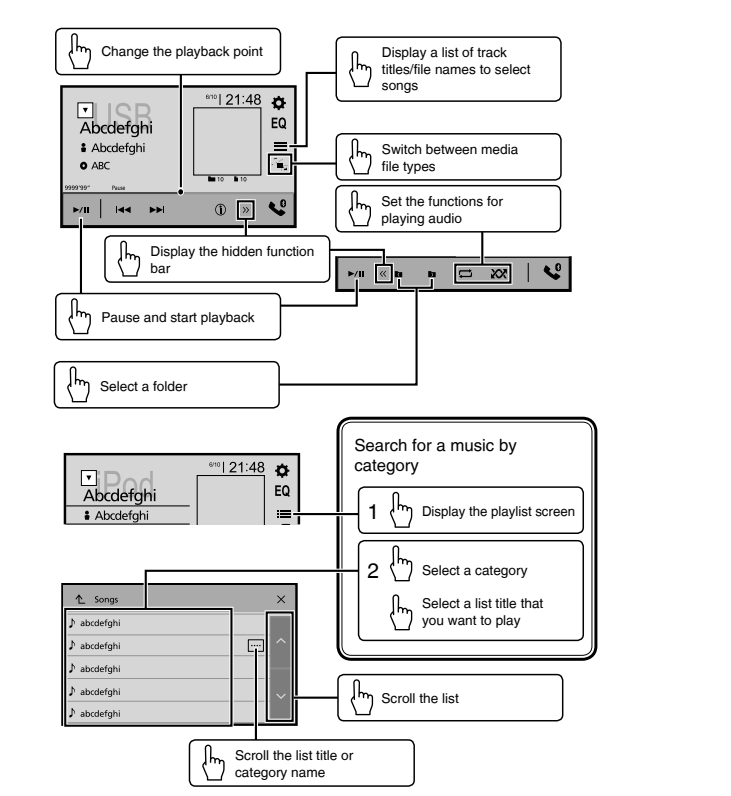
Moving images operation



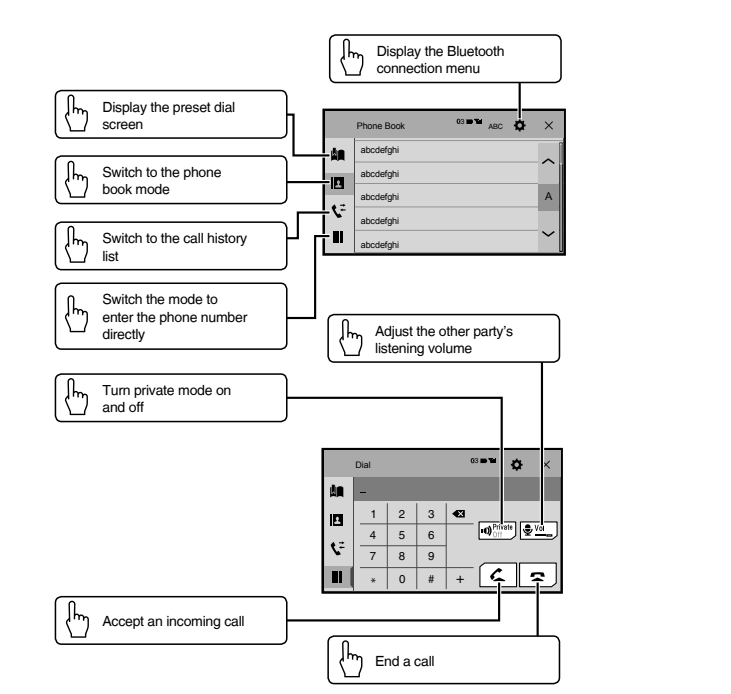
Moving images operation



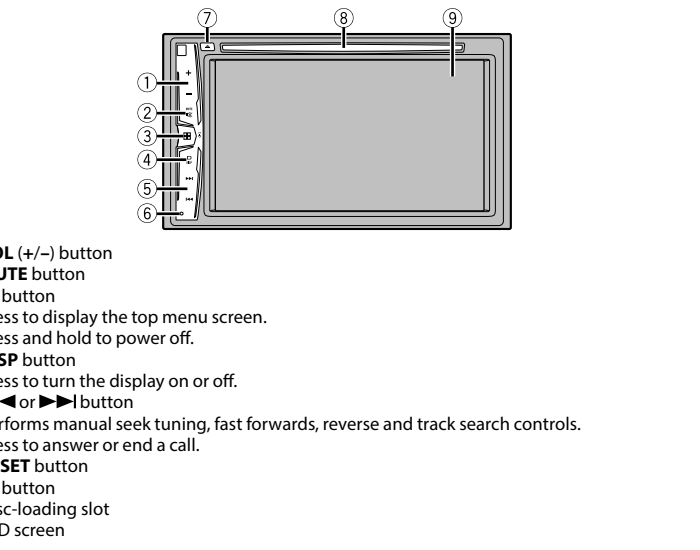
Audio operation



Bluetooth telephone operation

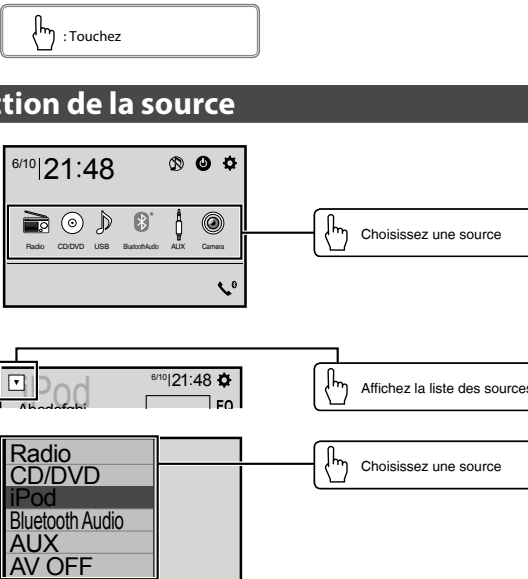


What's What

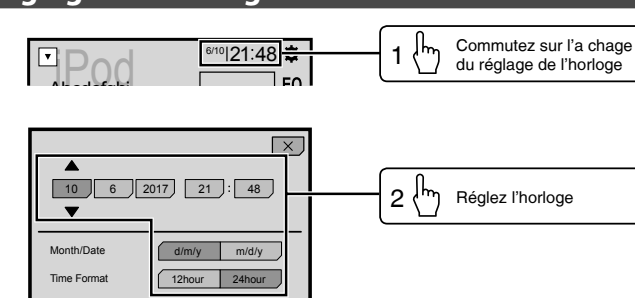


- 1 **VOL** (+/-) button
- 2 **MUTE** button
- 3 **button**
Press to display the top menu screen.
Press and hold to power off.
- 4 **DISP** button
Press to turn the display on or off.
- 5 **Left/Right arrow** button
Performs manual seek tuning, fast forwards, reverse and track search controls.
Press to answer or end a call.
- 6 **RESET** button
- 7 **Volume** button
- 8 **Disc-loading** slot
- 9 **LCD** screen

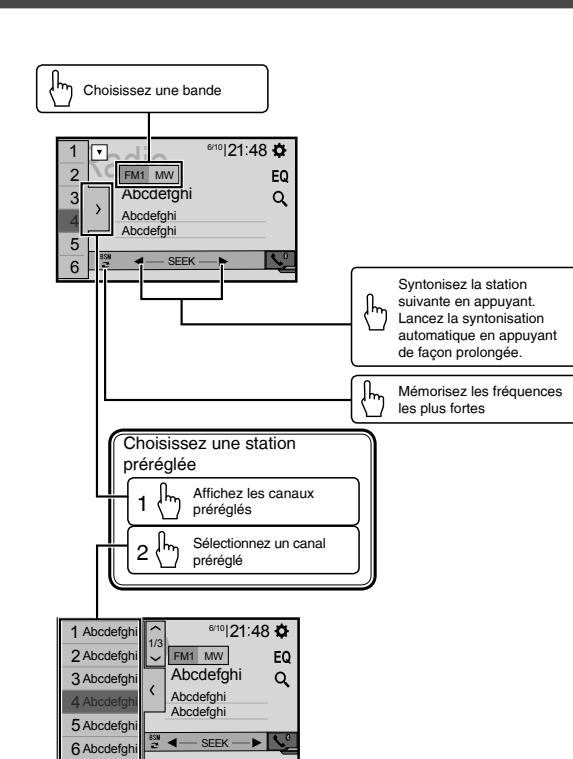
Sélection de la source



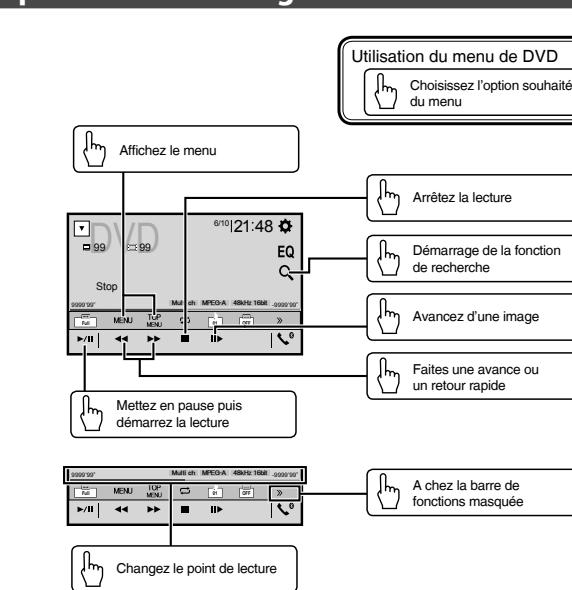
Réglage de l'horloge



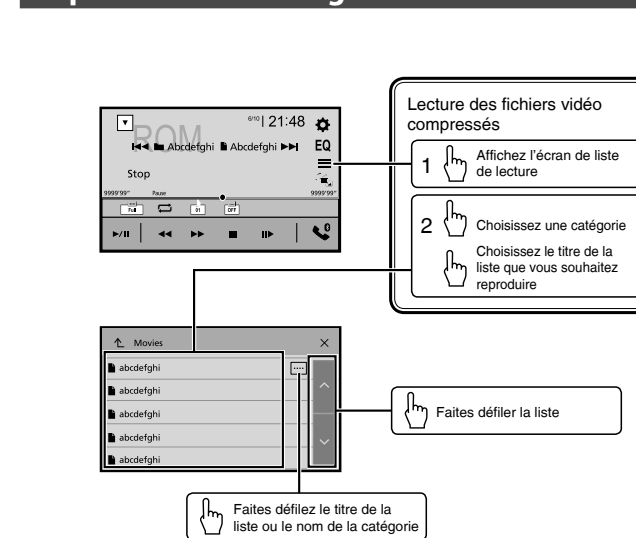
Utilisation du tuner



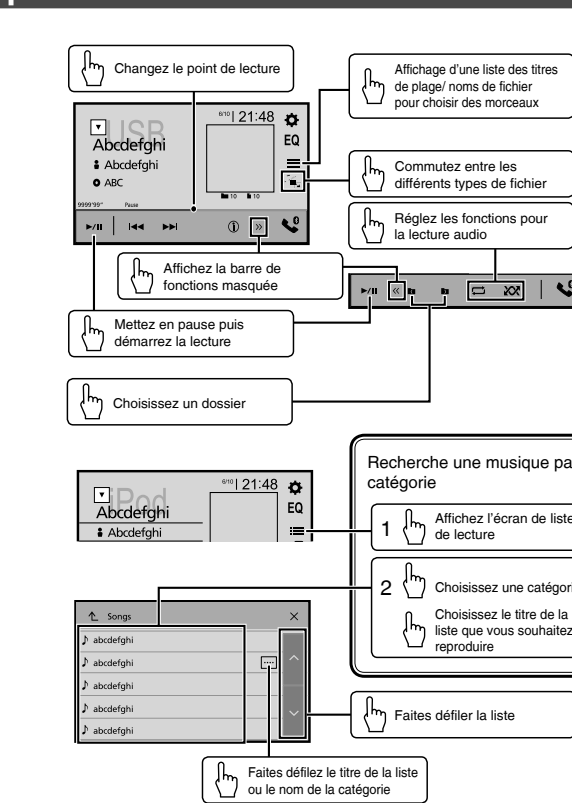
Exploitation des images animées



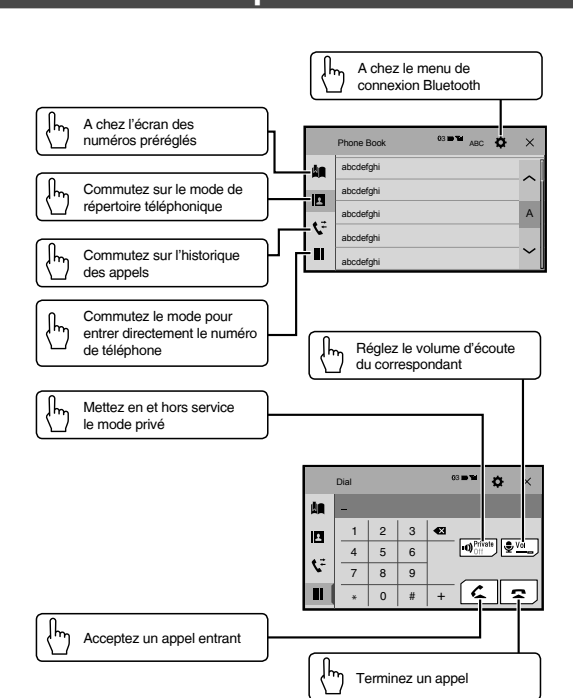
Exploitation des images animées



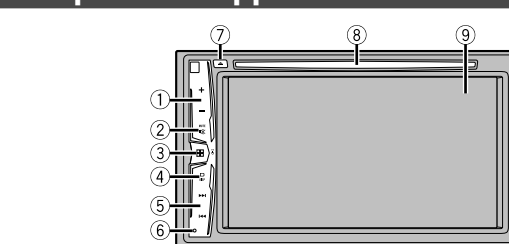
Opérations audio



Utilisation d'un téléphone Bluetooth

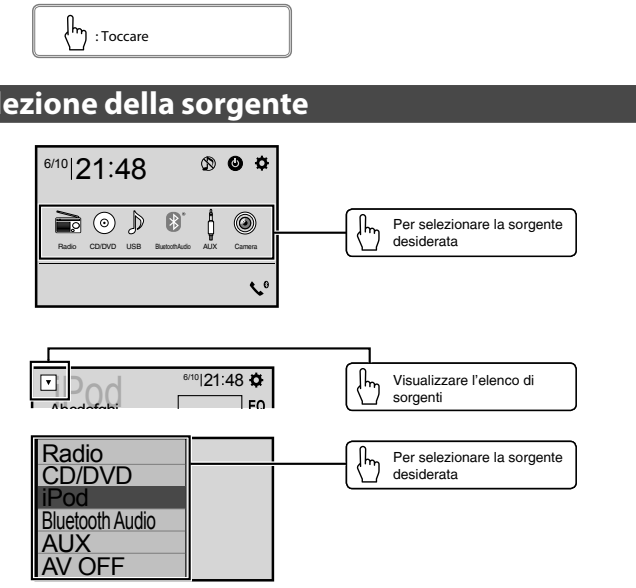


Description de l'appareil

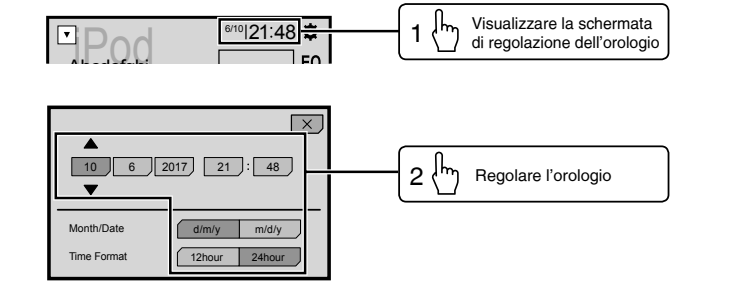


- 1 Bouton **VOL** (+/-)
- 2 Bouton **MUTE**
- 3 Bouton **DISP**
Appuyez pour afficher le menu principal. Maintenez la touche enfoncée pour mettre l'appareil hors tension.
- 4 Bouton **DISP**
Appuyez pour activer ou désactiver l'affichage.
- 5 Bouton **←** ou **→**
Exécute les commandes de syntonisation manuelle, d'avance/retour rapide et de recherche de pistes.
Appuyez pour répondre à un appel ou pour terminer un appel.
- 6 Bouton **RESET**
- 7 Bouton **▲**
- 8 Fente de chargement de disque
- 9 Écran LCD

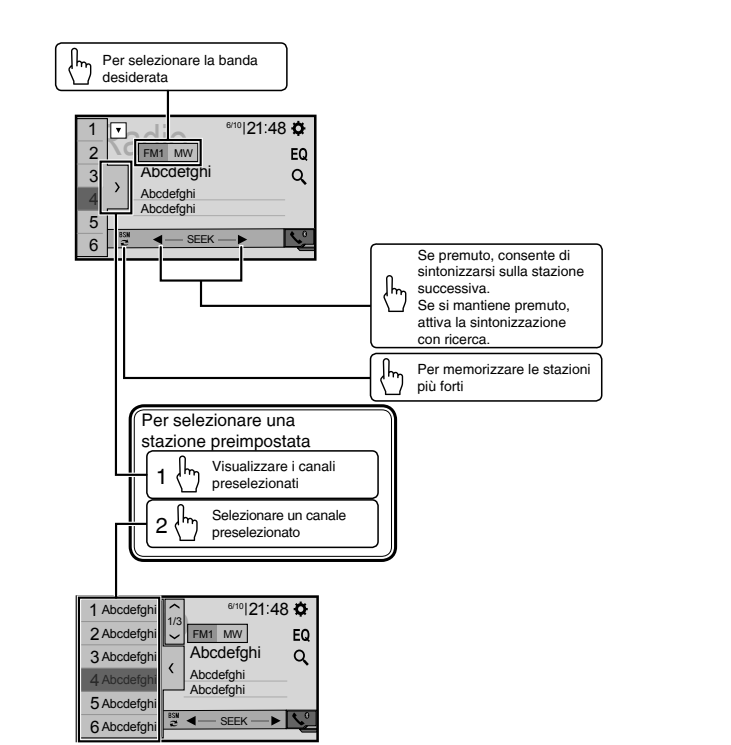
Selezione della sorgente



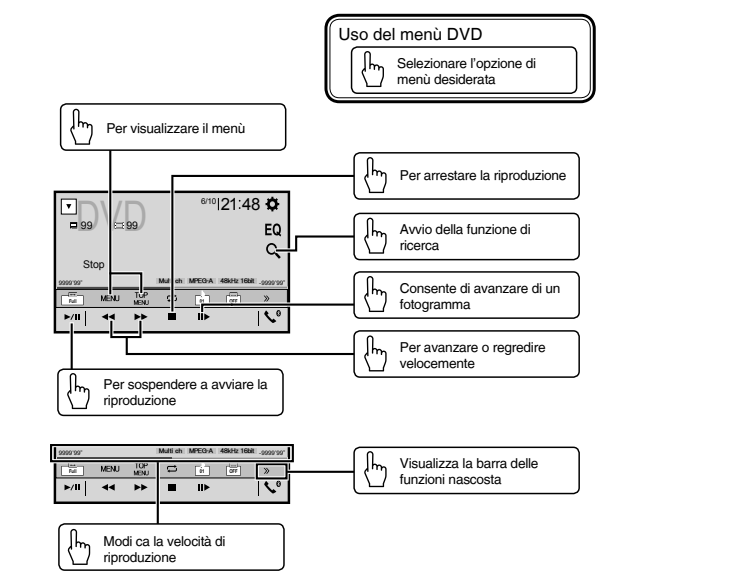
Impostazione dell'orologio



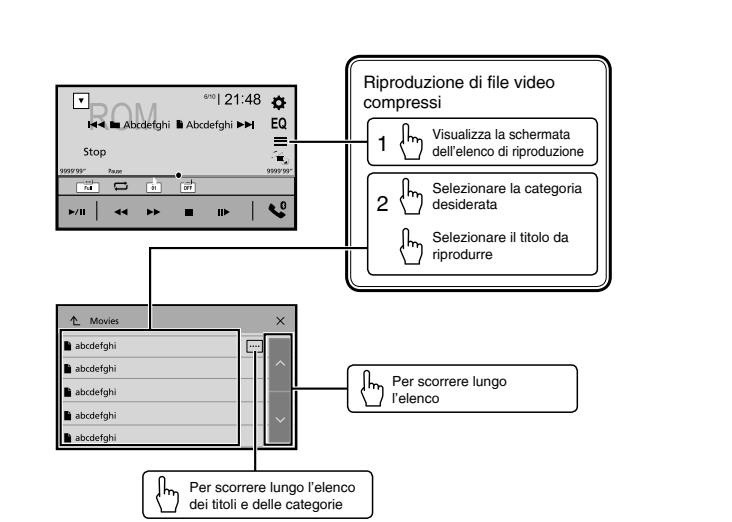
Uso del sintonizzatore



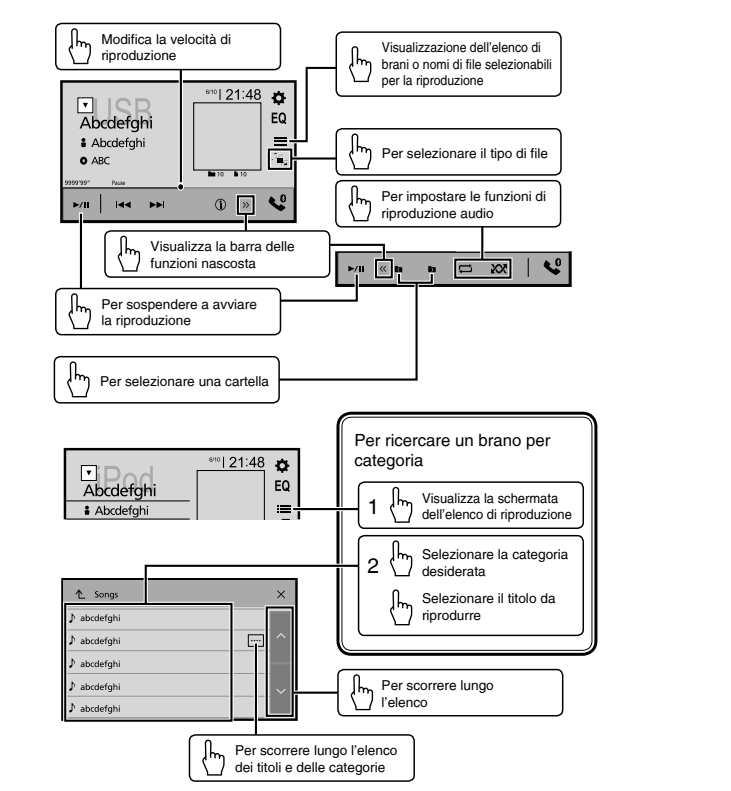
Uso delle immagini video



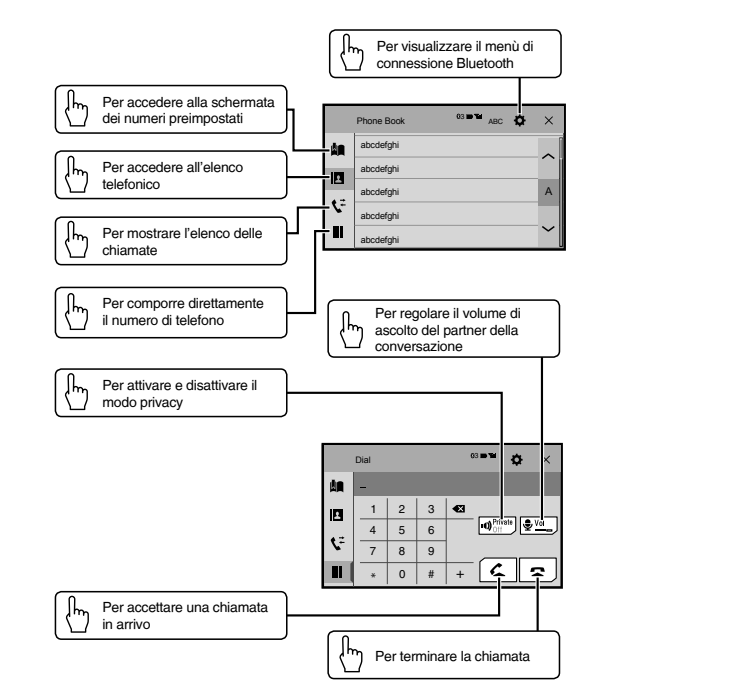
Uso delle immagini video



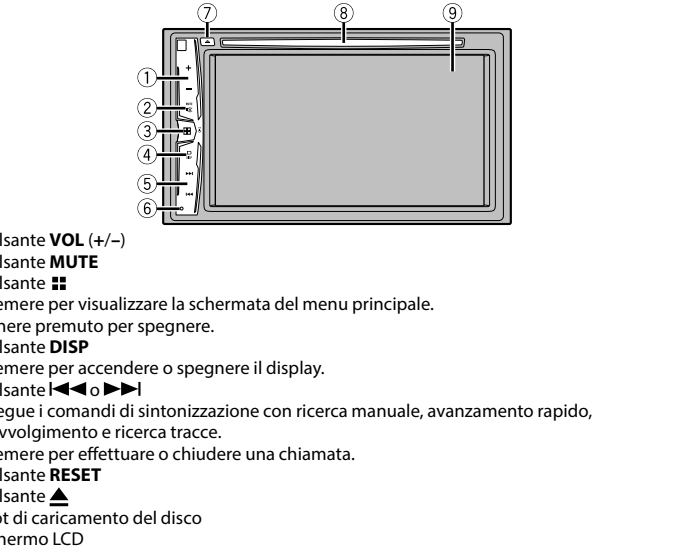
Uso delle funzioni audio



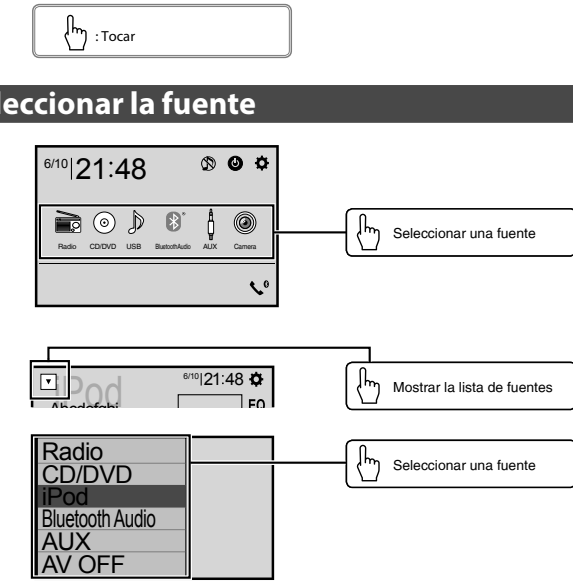
Uso del telefono Bluetooth



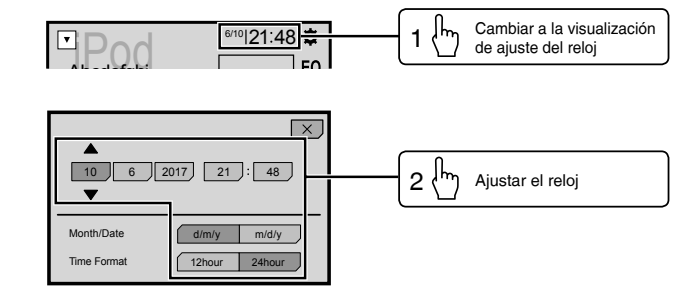
Nomenclatura



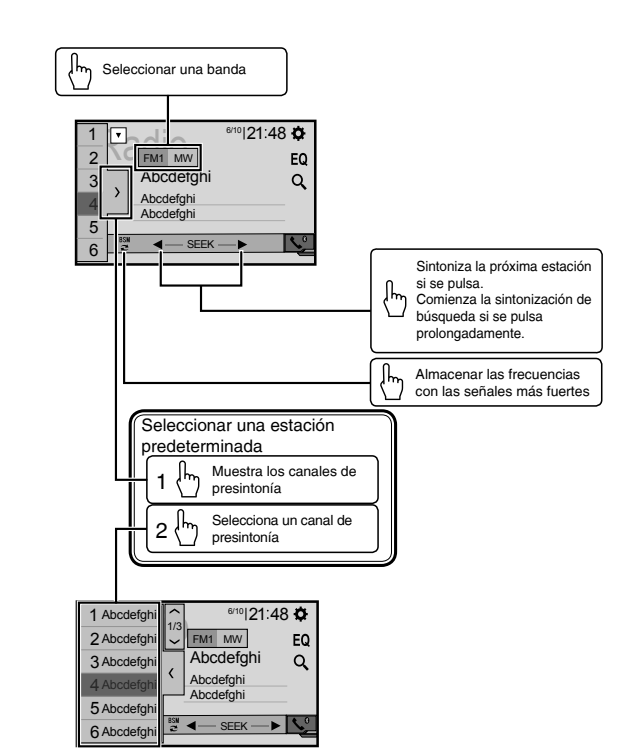
Seleccionar la fuente



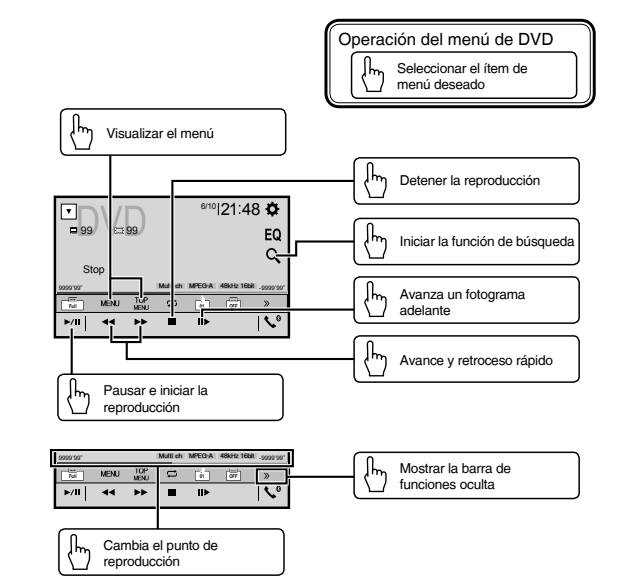
Ajuste del reloj



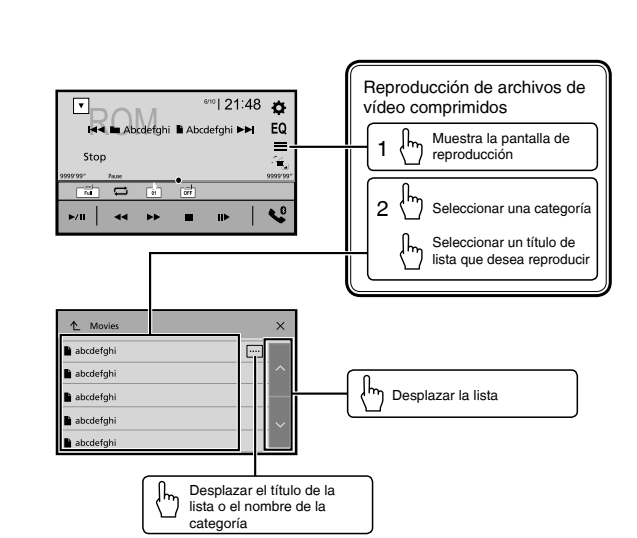
Operación del sintonizador



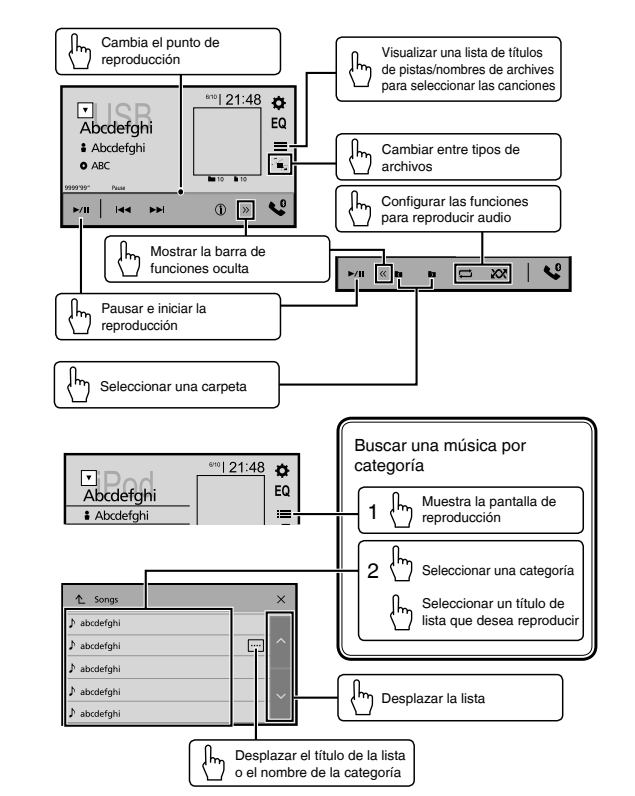
Operación de imágenes en movimiento



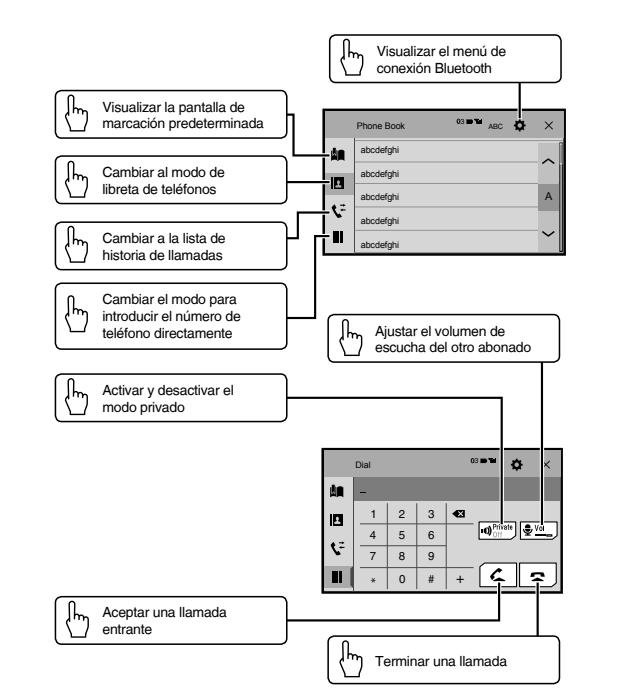
Operación de imágenes en movimiento



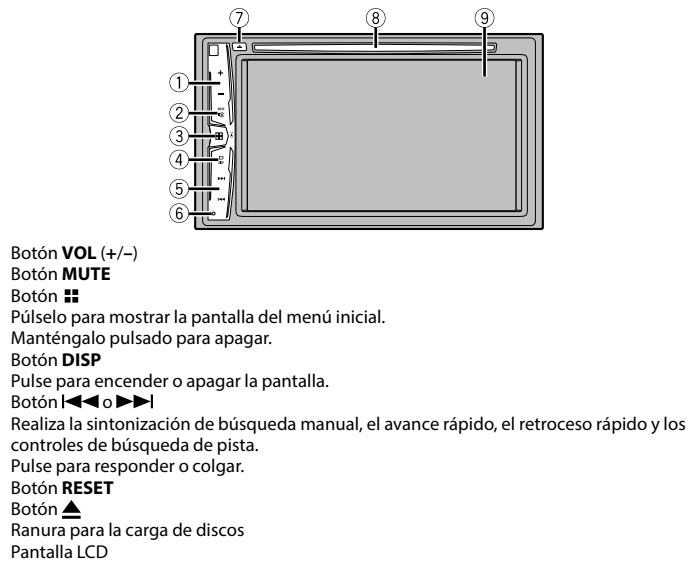
Operación de audio



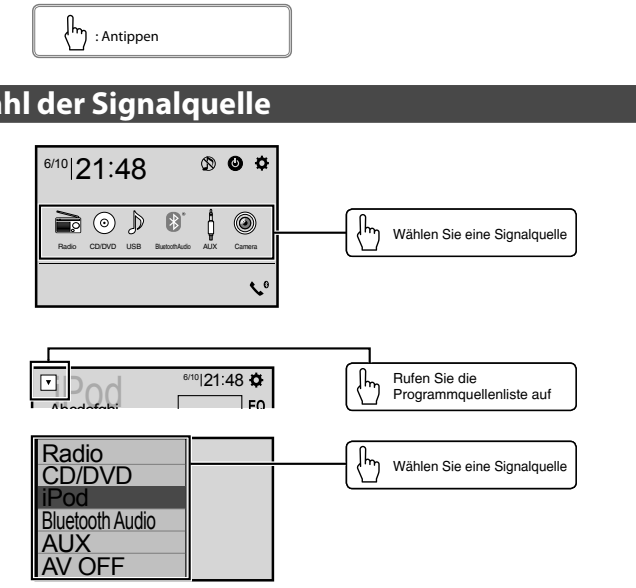
Operación con teléfono Bluetooth



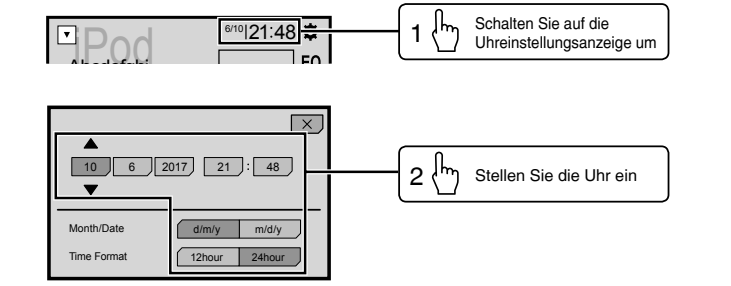
Qué es cada cosa



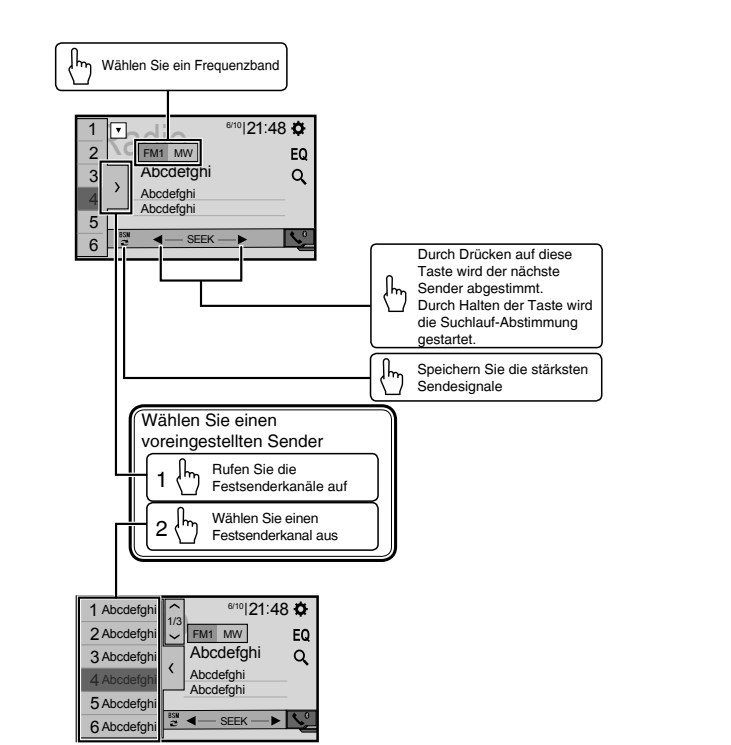
Wahl der Signalquelle



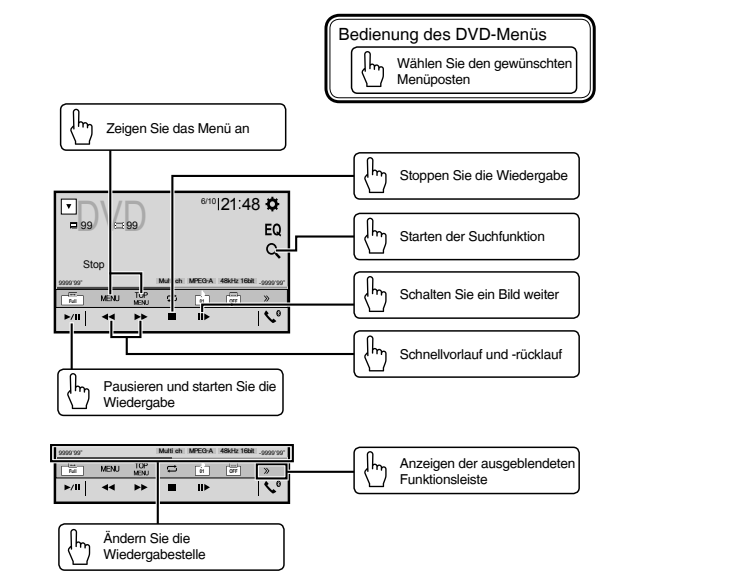
Einstellen der Uhrzeit



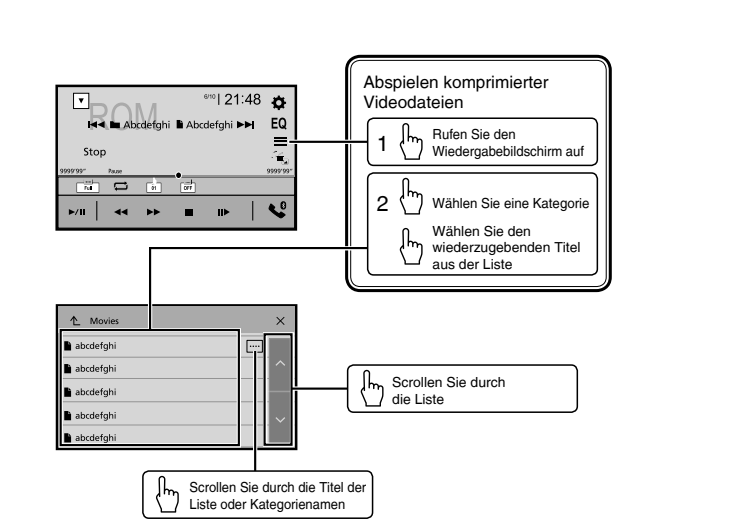
Tuner-Betrieb



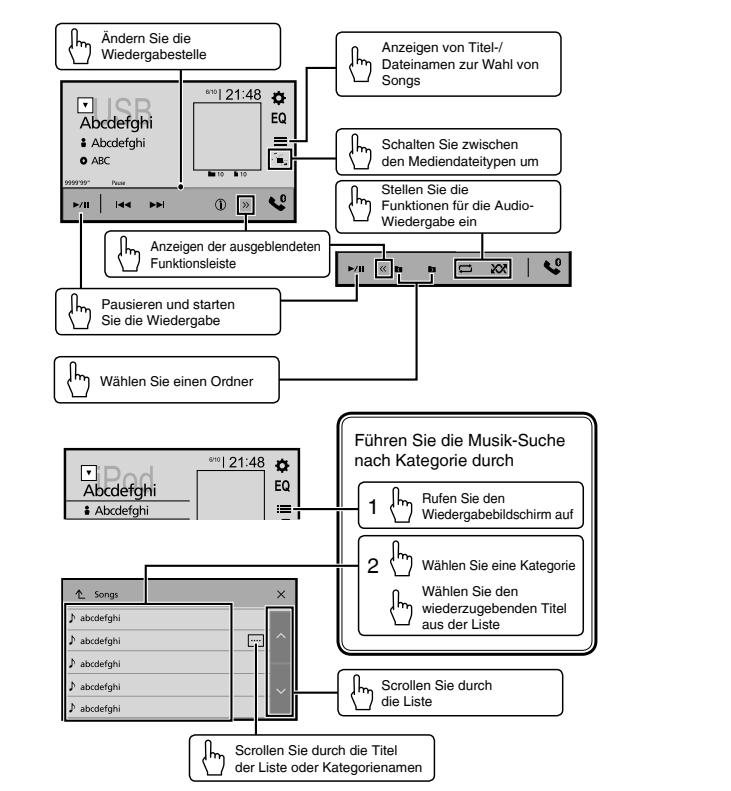
Bewegbild-Betrieb



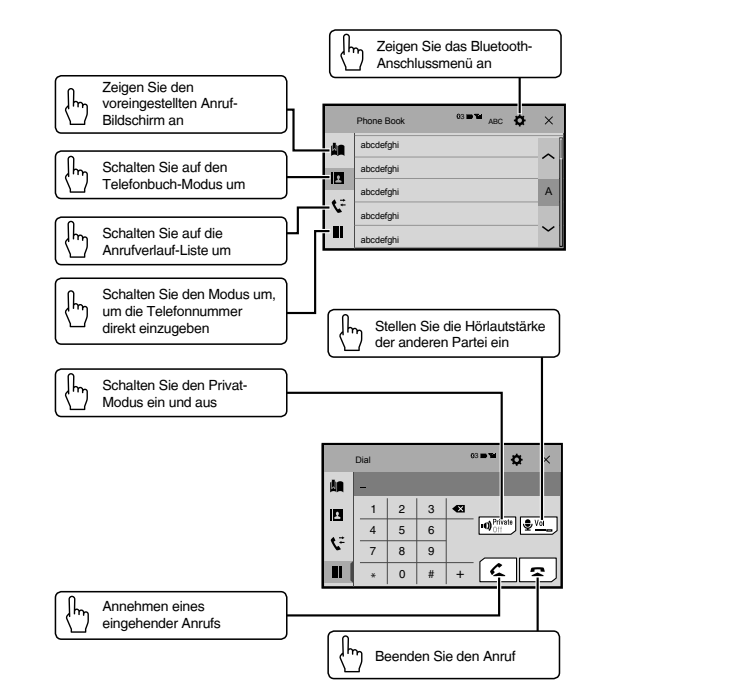
Bewegbild-Betrieb



Audio-Betrieb



Bluetooth-Telefonbetrieb



Die einzelnen Teile

