

NAVIGATION AV SYSTEM

AVIC-F900BT AVIC-F700BT

Quick Start Guide

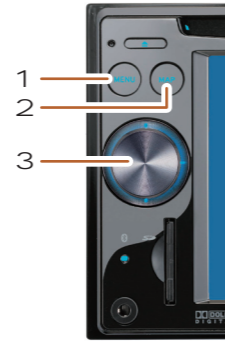
This guide is intended to guide you through the basic functions of this navigation system. For details, please refer to the operation manual provided on the Pioneer European website www.pioneer.eu.

Register Your Product on www.pioneer.eu or www.pioneer.co.uk and Receive a FREE 1 year subscription For Safety Camera Data (Service not available for Irish Residents)

Published by Pioneer Corporation.
Copyright © 2008 by Pioneer Corporation.
All rights reserved.
<KXYZ> <08D00000>

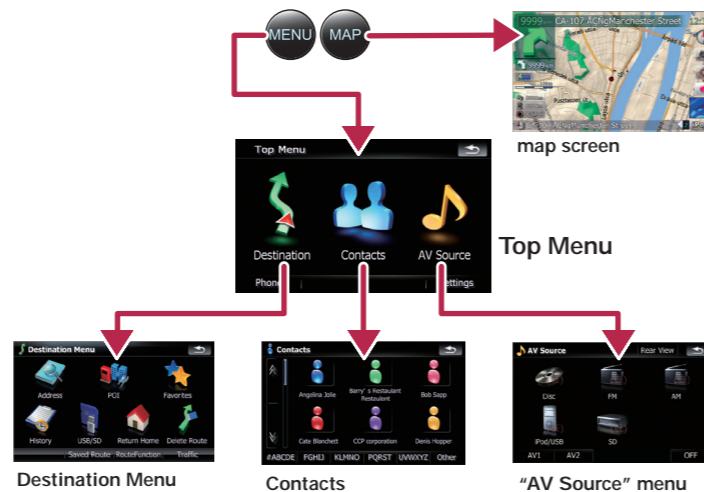
Printed in Belgium
<CRB2700-A> EW
MAN-900700-QSG-EN

Basic Hardware buttons



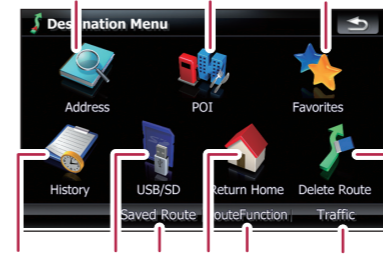
- 5 **MENU button**
Press to display "Top Menu".
- 6 **MAP button**
Press to view the map screen.
- 7 **MULTI-CONTROL**
Rotate to adjust the AV (Audio and Video) volume. On the map screen, move up or down to change the map scale. Move left or right to skip backward or forward the track or chapter, etc.
Note:
These are just a couple of examples.

Switching the screen



Search function overview

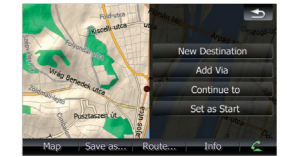
This navigation system provides multiple search methods.



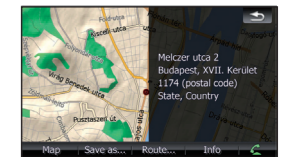
- 5 Searching for location by address
- 6 Searching for a place from stores, restaurants, and other businesses in the points of interest database
- 7 Selecting your stored location
- 8 Selecting a destination you searched for recently
- 9 Searching for POIs by using the data on external storage (USB, SD)
- > Selecting a route from a stored route
- > Set a route to your home
- < Viewing the current route information, searching for a destination by latitude and longitude and storing the current route
- = Viewing the traffic information
- > Cancelling your current route

Searching for your destination by address

- 1 Display **Destination Menu** and touch **Address**.
- 2 Input the information that you want to set as the destination.
- 3 Touch **Route...**
- 4 Touch **Add Destination**.

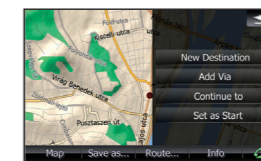


When route calculation is completed, navigation guidance begins.



This navigation systems gives you route guidance both visually and by voice.

Touching the item next to each option displays the screen to enter the character or select one of options. After narrowing down your destination, "Map Confirmation screen" will appear.



Setting the voice guidance volume



- 1 Touch the keys in the following order in **Top Menu**; **Settings** > **Navi Settings** > **Sound Settings**
- 2 Touch or drag the slider.

