

System Firmware Update Instructions for SPH-EVO107DAB, SPH-EVO98DAB and SPH-DA97DAB

REMARKS:

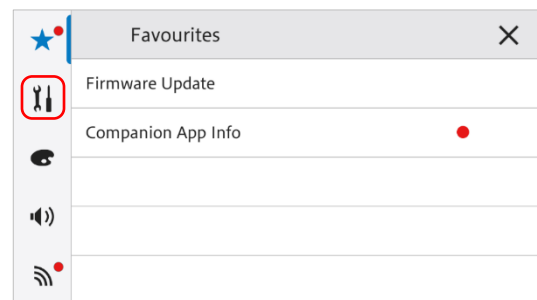
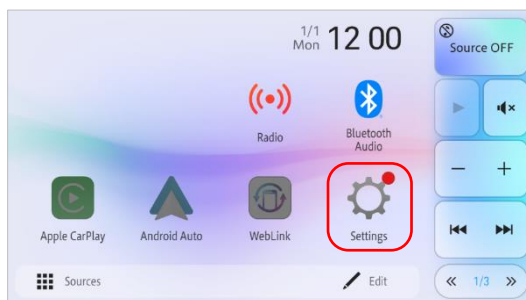
- ✓ If you have any difficulty carrying out these instructions, please contact Pioneer Customer Support. Once upgraded to this version, it is not possible to downgrade to a lower version.
- ✓ Please download and print these instructions before downloading and installing the firmware update, it is important that you complete all steps correct and, in the order, described below.
- ✓ Never turn your unit off or disconnect the USB device while the firmware is being updated.
- ✓ You can only update the firmware when the vehicle is stopped and the parking brake is engaged.
- ✓ Performing the firmware update will restore all settings to their default values.
- ✓ Note: if you prefer to update your firmware wirelessly, you can also use the official PxLink app. Please refer to the PxLink manual or website for details. You can install the app using the 2D code shown here.



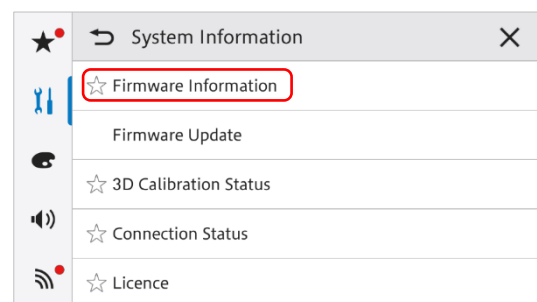
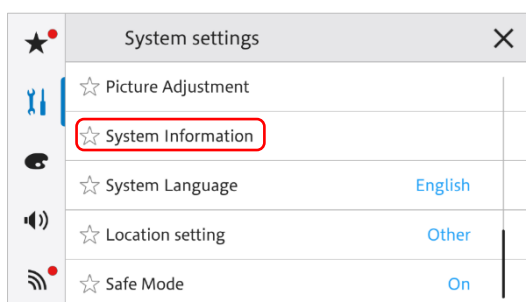
A. Displaying the firmware version

Check whether the firmware needs to be updated by checking the version number of the firmware.

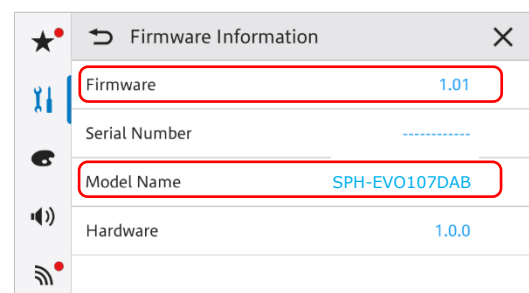
1. Select the "Settings" icon on the source list page, next touch the "System" icon.



2. Scroll down the list and select [System Information], next touch [Firmware information].



3. After the "Firmware Information" screen appears, check the firmware version; when the Version is lower than **3.00**, it is necessary to update the firmware.



B. Downloading the Firmware Update Files

1. Download the correct firmware file to a folder on your computer.

Model Name	File Name	Update file	Version
SPH-EVO107DAB	SPH-EVO107DAB_EU_Ver3.00.zip	SPH-EVO107DAB_EU.avh	3.00
SPH-EVO98DAB	SPH-EVO98DAB_EU_Ver3.00.zip	SPH-EVO98DAB_EU.avh	3.00
SPH-DA97DAB	SPH-DA97DAB_EU_Ver3.00.zip	SPH-DA97DAB_EU.avh	3.00

2. Double click the ZIP file to open it.
3. Extract and save the **"Update"** folder which contains the update file (see table above) to a folder on your computer.

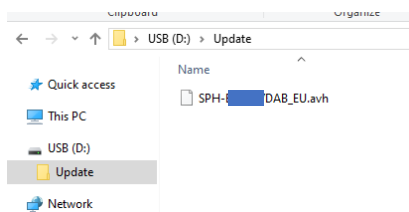
C. Updating the firmware on your Unit

IMPORTANT

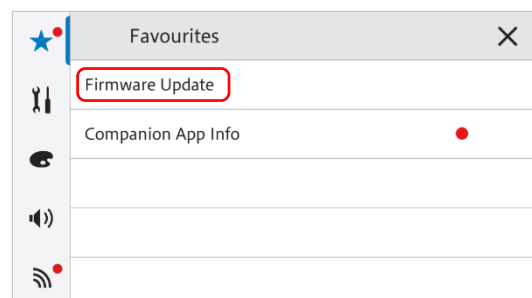
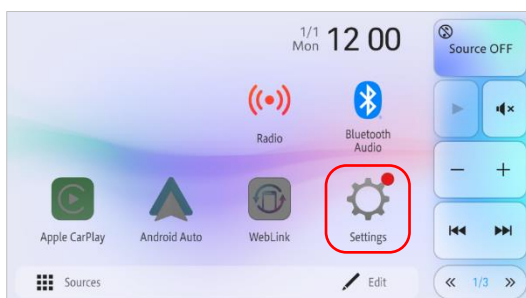
- ✓ Please DO NOT perform this firmware update if the model number of your Pioneer unit is anything other than any of the models listed above.
- ✓ Ensure that the correct **update folder** is located within the root (top) folder of your USB storage device. There should be no other files on the USB storage device.
- ✓ While your unit is being updated, DO NOT turn off the system's power and DO NOT touch the unit's touch panel screen as this may result in severe damage to your unit.
- ✓ DO NOT remove the USB storage device during the firmware update.
- ✓ Before you start the update procedure, make sure to disconnect any mobile devices that are currently connected to your unit.

PROCEDURE:

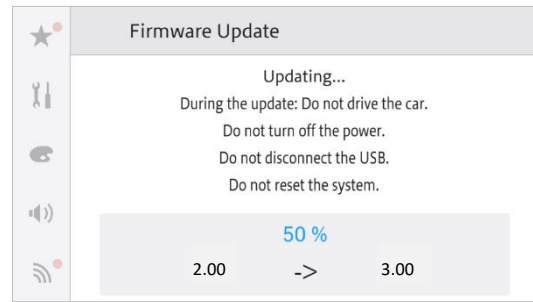
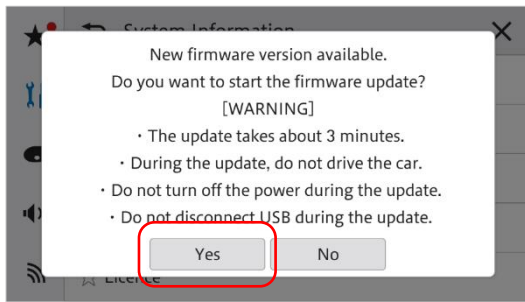
1. Connect a blank (FAT32 or NTFS formatted) USB storage device with a minimum capacity of 512MB to your computer, next locate and copy the correct **update folder** which contains the avh-update file onto the Root (top) folder of USB storage device.



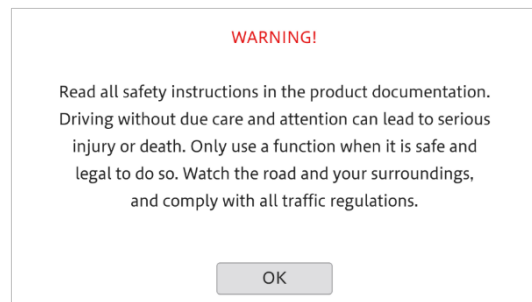
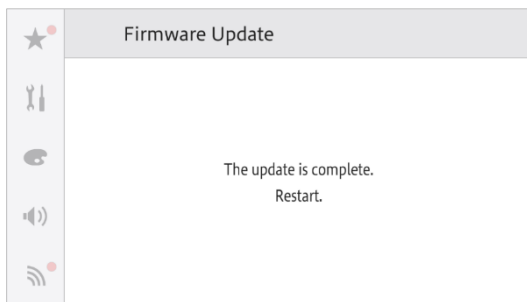
2. Connect the USB storage device to the USB port
3. On your unit; **set the audio source to OFF.**
4. Select the "Settings" icon on the source list page, next touch [Firmware Update].



5. On the "Firmware Update" screen, touch [Yes]. The progress is displayed. DO NOT turn your unit off or eject the USB storage while the firmware is being updated.



6. When the update is complete, the following screen will be displayed. Please disconnect the USB storage device. The product will reboot after the update is finished. Do not touch anything even when the screen is blacked out. After it has finished rebooting, the screen will return to the menu screen. The firmware update is now complete.



6. Check the firmware version as described in Step A "Displaying the firmware version" to confirm that the update was successful; the firmware should be updated to version **"3.00"**

Firmware Update FAQ

Q: What if my set does not switch on automatically after updating the software or starts up more than once?

A: Turn off the ignition key and turn on again – the set should start up now.

Q: What if I cannot upgrade my set / the set does not show the start up screen after more than 1 attempt?

A: Please contact your local Pioneer service organisation for a product check-up.

Contact Information

Pioneer Customer Support Center

<http://www.pioneer.eu>