

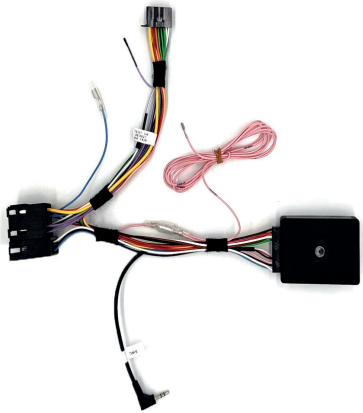
Pioneer

Installation guide for :

- AVIC-Z1000D35-C
- AVIC-Z1000D34-C

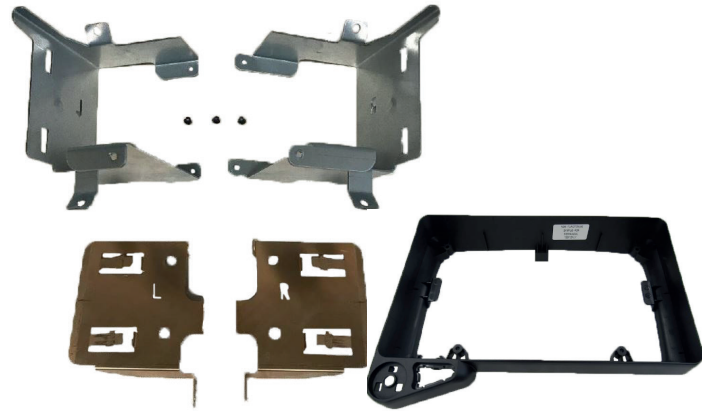


Fiat Ducato model year '14 - Open dash only



Interface

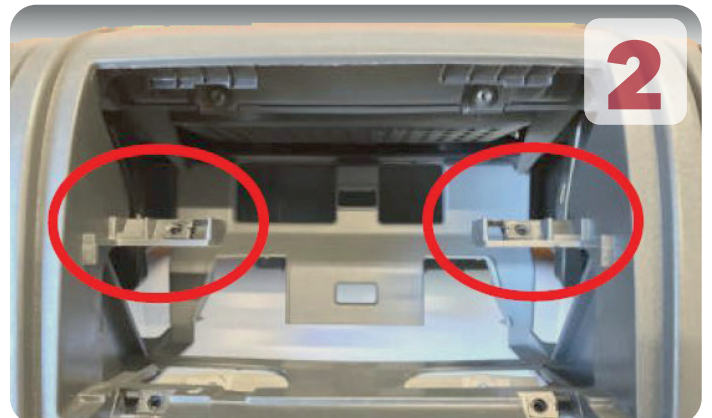
Depending on the kit, the interface may look different



Installation kit - metal brackets and plastic fascia with rotary command keys



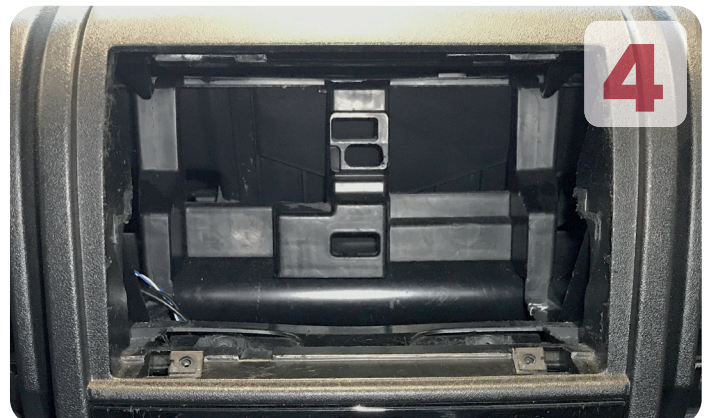
Original dashboard setup
Remove the storage pockets



Locate the two support bars left and right
in the dashboard



Cut the support bars in line with the dash



Dashboard after cutting

Pioneer



Start with the right side bracket



Put it in the radio cavity



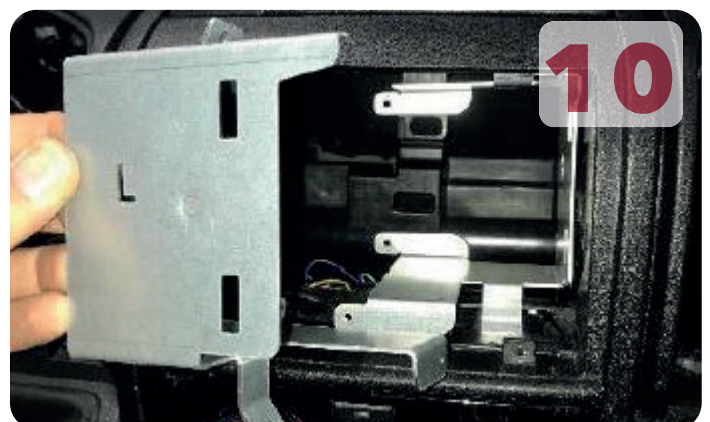
Once inside, turn the bottom part downwards



Make sure the bottom mounting point is over the original mounting point

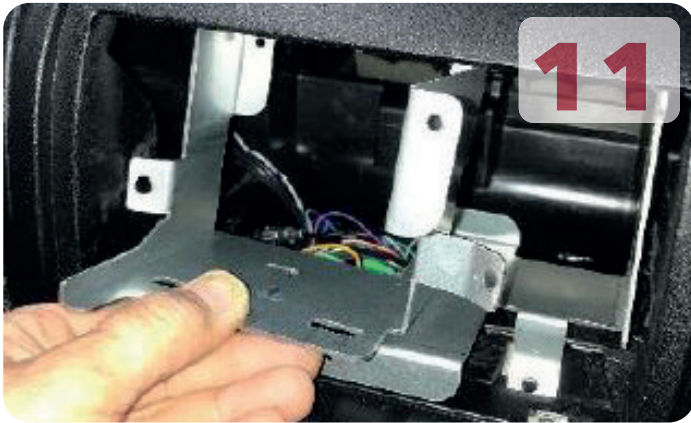


Pull the top mounting point underneath the original one to the front

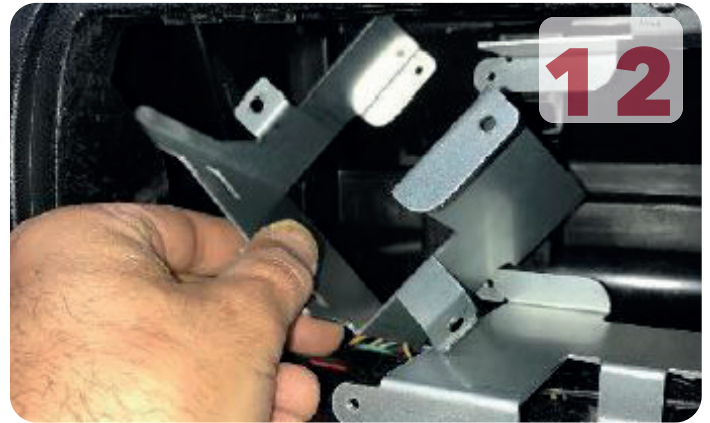


Next take the left side bracket

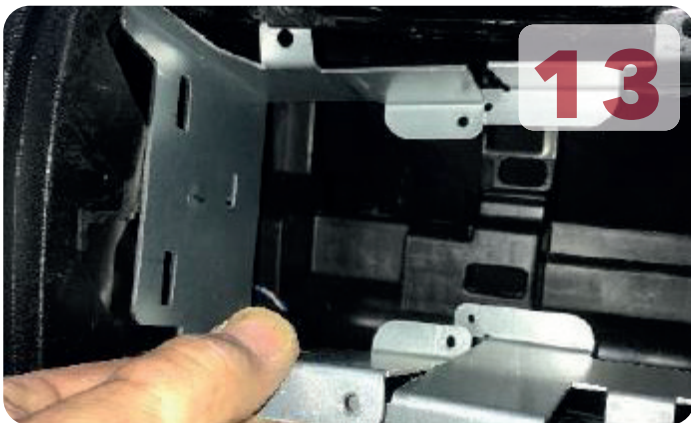
Pioneer



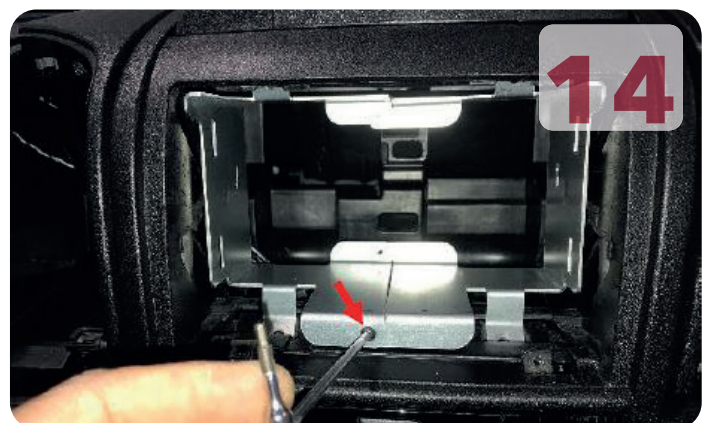
Also put it sideways



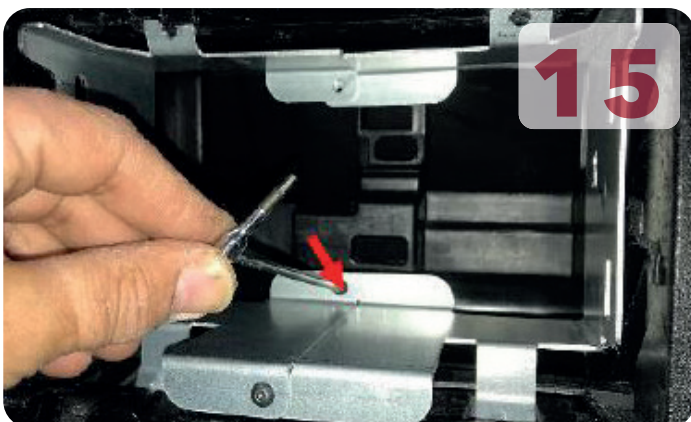
Once inside, turn it making sure the mounting points are in front of the original ones



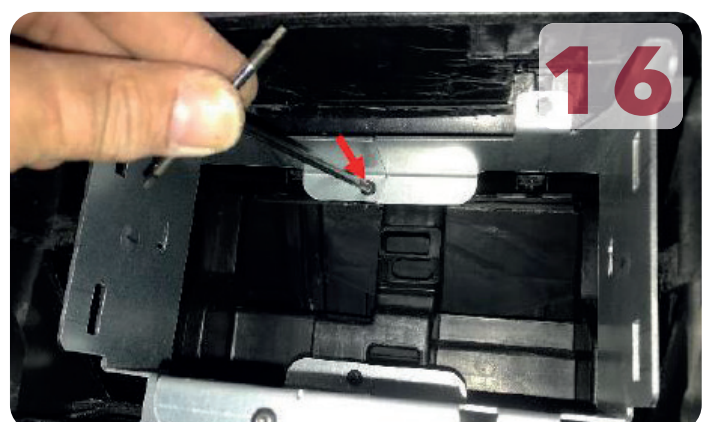
Align the fixation points of both brackets



Start with the front lower one

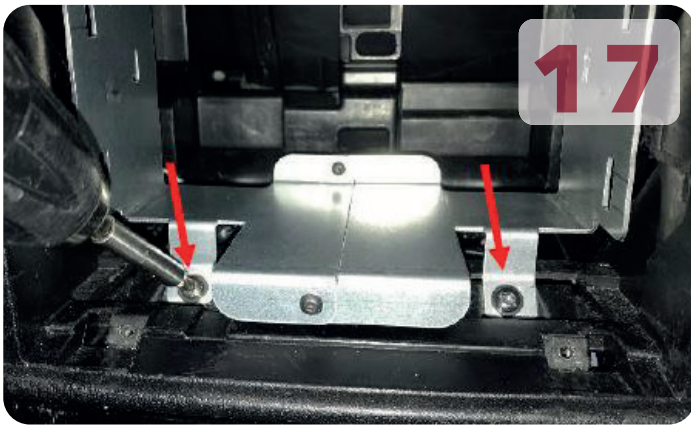


Continue with the lower rear fixation

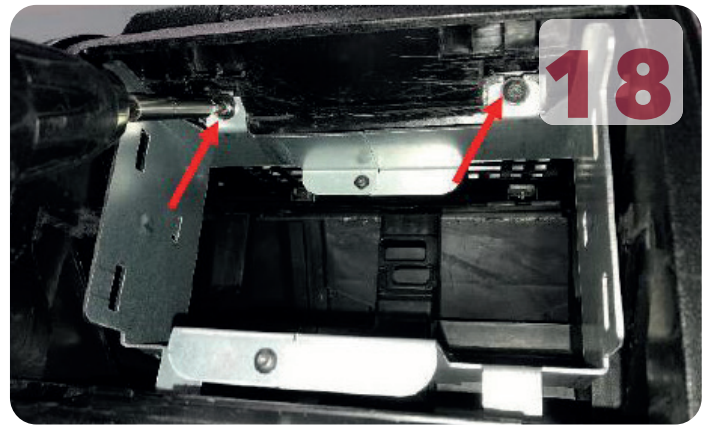


End with the top one

Pioneer



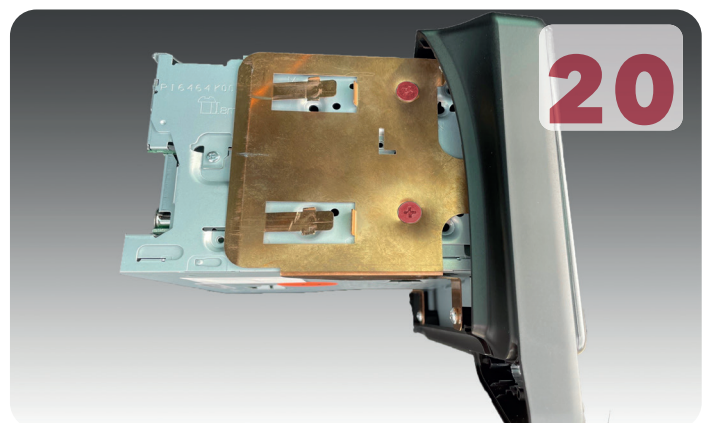
Secure the cage on the bottom mounting points using the original screws



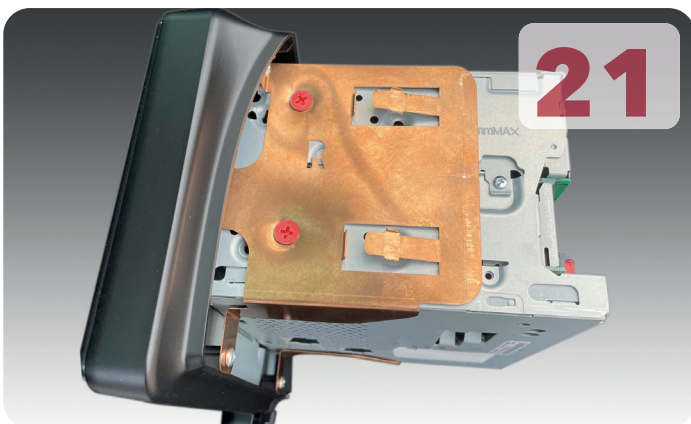
Secure the cage on the upper mounting points using the original screws



Make sure to pull the connection cable for the rotary commander out underneath the cage



Attach the side brackets to the Pioneer unit and face panel - Left side



Attach the side brackets to the Pioneer unit and face panel - Right side



Final look of the mounting cage

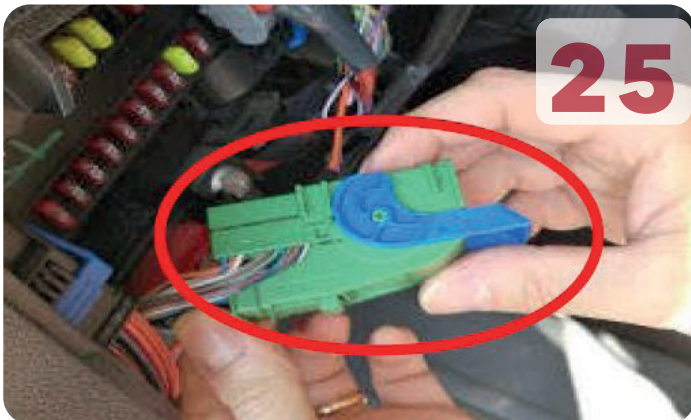
Pioneer



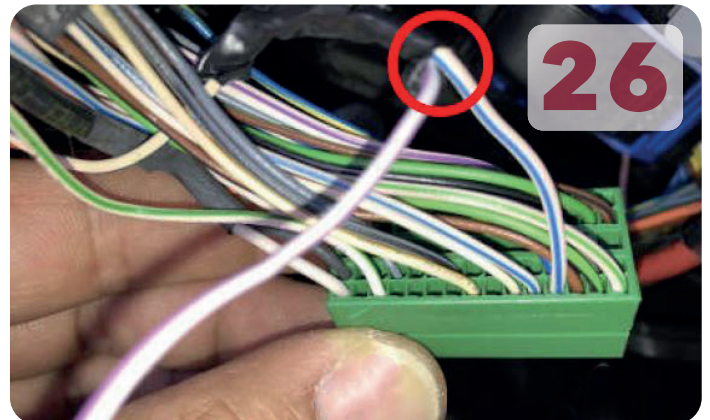
Open the fuse box in the dashboard underneath the steering wheel



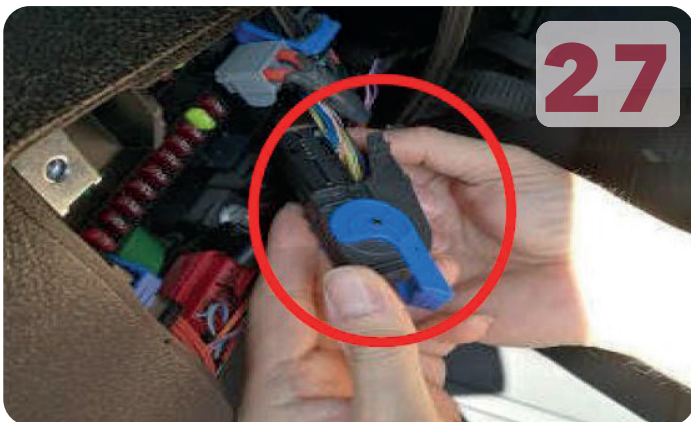
Locate the black and green connector as indicated



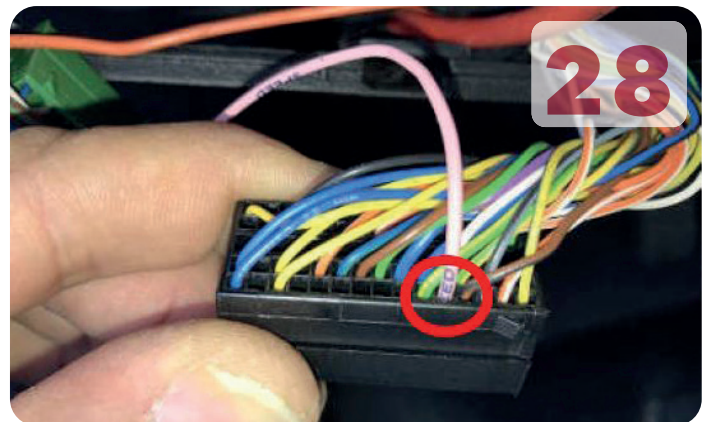
Open the green connector and slide the cables out



Connect the violet/white cable (reverse signal) to the cable in pin four.



Open the black connector and slide the cables out

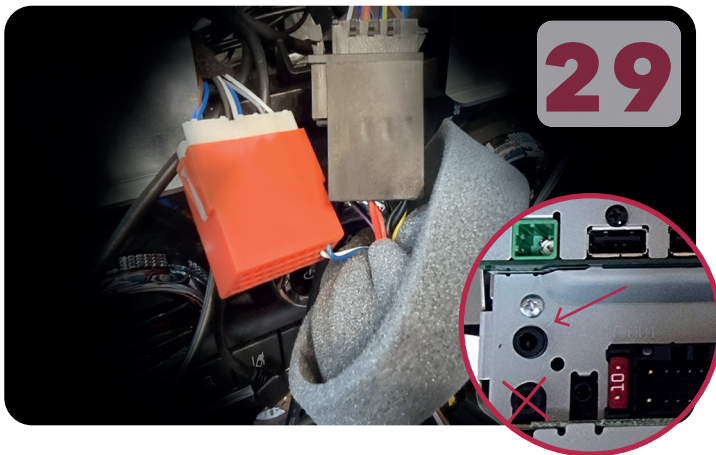


Insert the pink cable pin (speedpulse) to the open position fifty six (56)

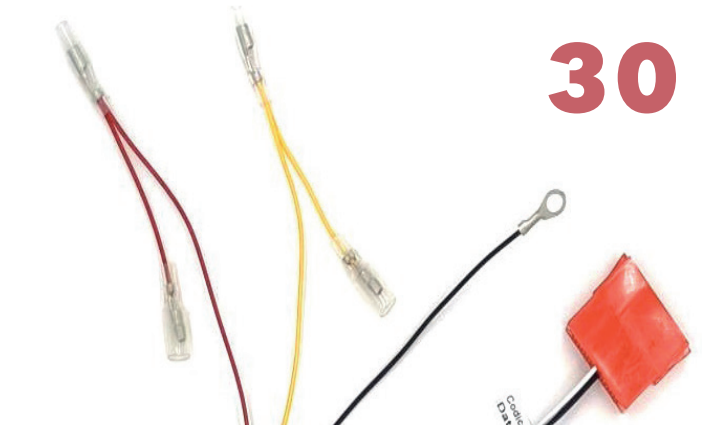
Pioneer

Step 31 is only for AVIC-Z1000D35-C

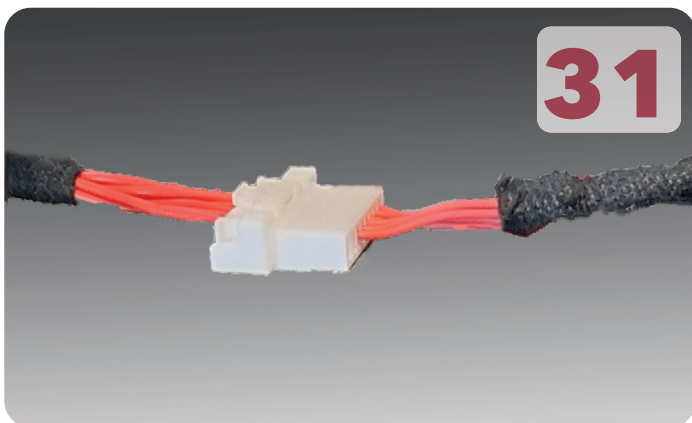
Step 32 is only for AVIC-Z1000D34-C



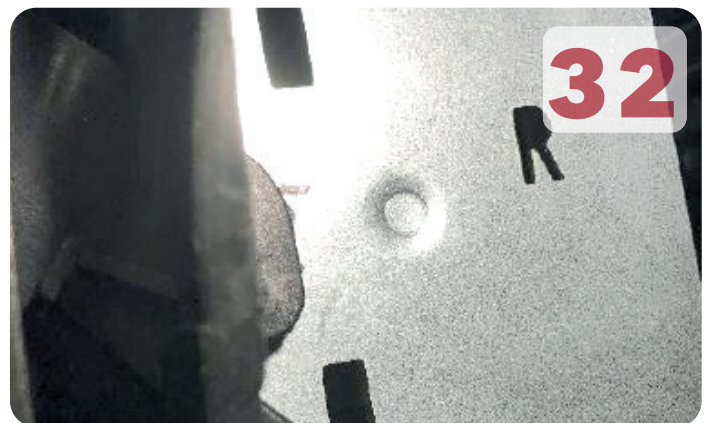
Plug in the main connectors
!Use top plug for steering wheel controls (W/R)!



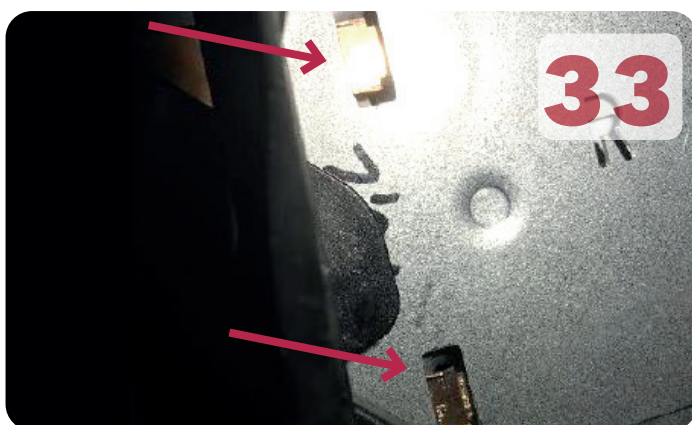
Connect the battery and accessory line to the Pioneer main power connector



Connect the rotary connector plug and slide the unit in the dashboard



Once all connections are made, the unit can be pushed in the dashboard



Push until the spring mechanism clicks
! Visual representation only
Airvents do not need to be removed !



Finished installation