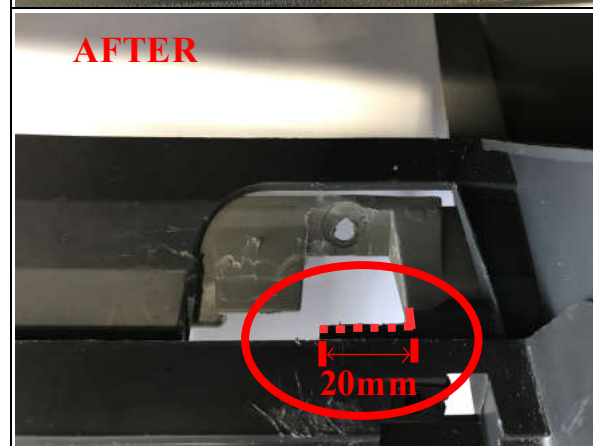
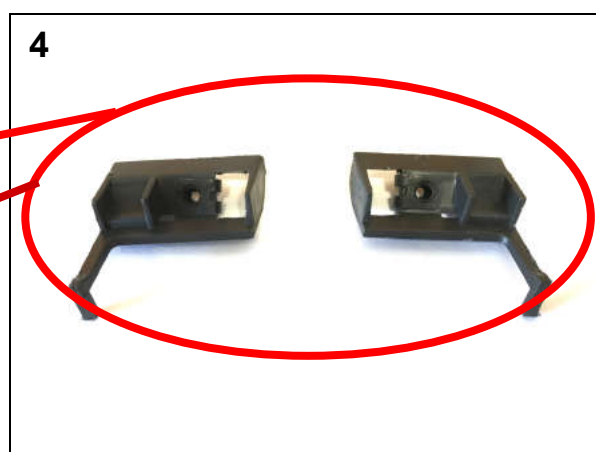


INSTALLATION MANUAL



Cut as shown in the pictures 2-3-4.



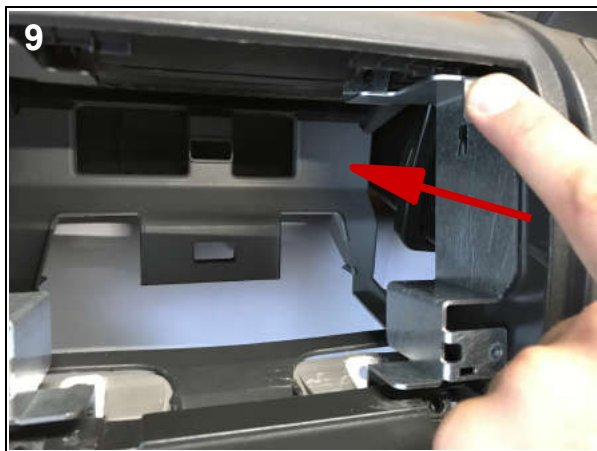
ATTENTION!

If necessary cut (20mm) as shown in the picture 6.

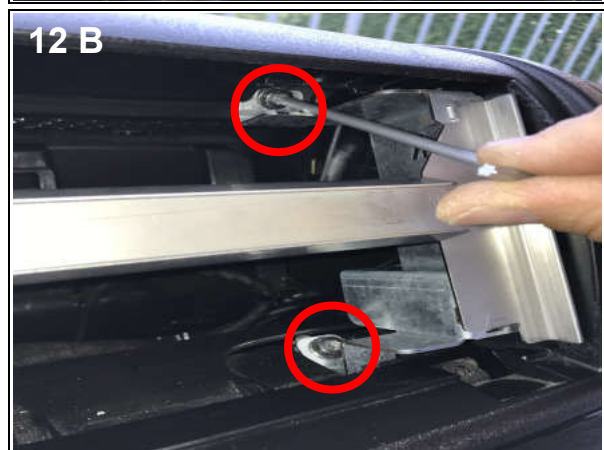
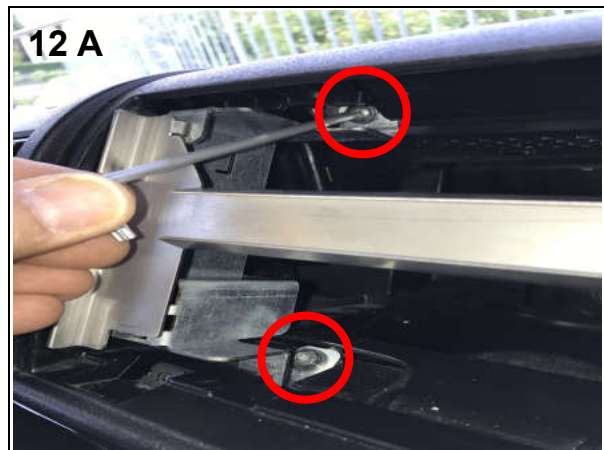
If the dashboard does not have plastic flaps, then no cutting is needed.



Insert the brackets as shown in the pictures 7-8-9.



Before tightening the screws, put the installation jig in place, as shown. Insert the jig in the indicated square holes. Fix the two screws for each bracket as shown in the pictures 12A and 12B.





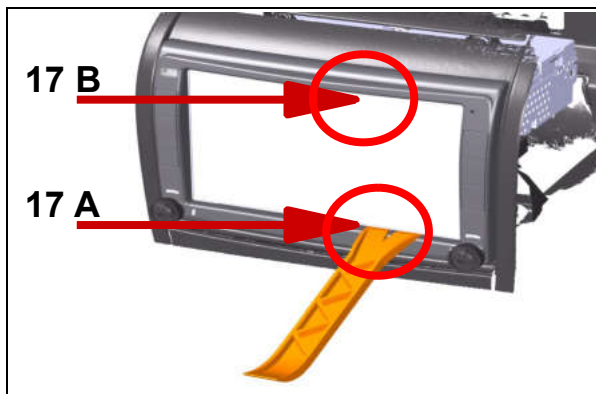
Before inserting the radio unit in the dashboard put the keys connectors in the position as shown.



Insert the radio unit in the dashboard tunnel and fit it with the two screws for each side as shown in the pictures 14-15.



Connect the connectors of picture 13 to the fascia plate and insert it.



Attention! If you want remove to the fascia plate:
 1) remove the bottom (17A);
 2) remove the top (17B);

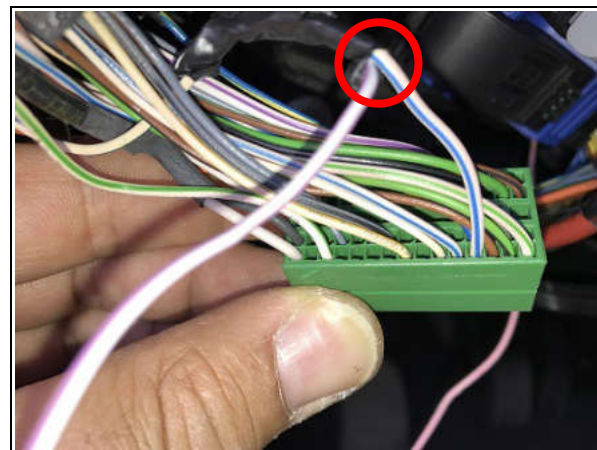
Please note: to avoid damaging the fascia plate, it is preferable to use teflon tools as shown in this manual. It also possible to use other tools but it is safer to cover them with a rag.



Attention! To install the vehicle adapter, please follow the shown steps:



Find the two indicated connectors in the fuse box near the steering wheel column.



Open the green connector as shown; the supplied Violet/White wire must be connected to PIN n°4. If other wires are already occupying this PIN, they must be spliced with the supplied Violet/White wire.



Open the Black connector as shown; the supplied Pink wire must be connected to the PIN n°56.