

DVD RDS AV RECEIVER  
 AUTORADIO AV RDS LECTEUR DE DVD  
 SINTOLETTORE DVD RDS CON AV  
 RADIO AV RDS CON DVD  
 DVD-RDS-AV-EMPFÄNGER  
 DVD RDS AV-ONTVANGER

# AVH-Z7100DAB

Quick start guide  
 Guide de démarrage rapide  
 Guida rapida all'uso  
 Guía de iniciación rápida  
 Schnellstartanleitung  
 Snelstartgids



**Pioneer CarStereo-Pass**  
 Bitte bei Kauf sofort ausfüllen.  
 Please fill out immediately after purchase.  
 Eingravierte 14-stellige Serien-Nummer:  
 Engraved 14-digit serial number:

P	I													
---	---	--	--	--	--	--	--	--	--	--	--	--	--	--

Kaufdatum:  
 Date of purchase:

--	--	--	--	--	--

Händler-Stempel  
 Dealer's stamp

Le Pioneer CarStereo-Pass est utilisable seulement en Allemagne.

< QRD3556-A >

**English**  
 This guide is intended to guide you through the basic functions of this unit.  
 For details, please refer to the Operation manual stored on the CD-ROM.  
 Furthermore, manuals are available on the website.  
<http://www.pioneer-car.eu>

**Français**  
 Ce guide a pour but de vous présenter les fonctions de base de cet appareil.  
 Pour les détails, veuillez vous reporter au mode d'emploi qui se trouve sur le CD-ROM.  
 Des manuels supplémentaires sont aussi disponible sur notre site web.  
<http://www.pioneer-car.eu>

**Italiano**  
 Questa guida illustra le funzioni principali dell'apparecchio.  
 Per informazioni particolareggiate s'invita a consultare il manuale d'uso fornito nel CD-ROM.  
 I manuali sono inoltre disponibili presso il sito  
<http://www.pioneer-car.eu>

**Español**  
 Se ha diseñado esta guía con la intención de guiarle a través de las funciones básicas de esta unidad.  
 Para los detalles, consulte el Manual de instrucciones que se encuentra almacenado en el CD-ROM.  
 Además, los manuales están disponibles en el sitio Web.  
<http://www.pioneer-car.eu>

**Deutsch**  
 Diese Anleitung führt Sie durch die grundlegenden Funktionen dieses Geräts.  
 Einzelheiten finden Sie in der Bedienungsanleitung, die auf der CD-ROM enthalten ist.  
 Außerdem sind die Bedienungsanleitungen auch auf unserer Website verfügbar.  
<http://www.pioneer-car.eu>

**Nederlands**  
 Deze gids is bedoeld om u bekend te maken met de basisfuncties van dit toestel.  
 Raadpleegt u voor details de handleiding op de CD-ROM.  
 Handleidingen zijn ook verkrijgbaar op onze website.  
<http://www.pioneer-car.eu>

**Declaration of Conformity with regard to the Radio Equipment Directive 2014/53/EU**

Manufacturer: <b>Pioneer Corporation</b> 28-8, Honkomagome 2-chome, Bunkyo-ku, Tokyo 113-0021, JAPAN	EU Representative's & Importer: <b>Pioneer Europe NV</b> Haven 1087, Keetberglaan 1, 9120 Melsele, Belgium <a href="http://www.pioneer-car.eu">http://www.pioneer-car.eu</a>
---	---

[\*] AVH-Z7100DAB  
 English:  
 Hereby, Pioneer declares that the radio equipment type [\*] is in compliance with Directive 2014/53/EU.  
 The full text of the EU declaration of conformity is available at the following internet address: <http://www.pioneer-car.eu/compliance>

Português:  
 O(a) abaixo assinado(a) Pioneer declara que o presente tipo de equipamento de rádio [\*] está em conformidade com a Diretiva 2014/53/UE.  
 O texto integral da declaração de conformidade está disponível no seguinte endereço de Internet: <http://www.pioneer-car.eu/compliance>

Nederlands:  
 Hierbij verklaar ik, Pioneer, dat het type radioapparaat [\*] conform is met Richtlijn 2014/53/UE.  
 De volledige tekst van de EU-conformiteitsverklaring kan worden geraadpleegd op het volgende internetadres: <http://www.pioneer-car.eu/compliance>

French:  
 Le soussigné, Pioneer, déclare que l'équipement radioélectrique du type [\*] est conforme à la directive 2014/53/UE.  
 Le texte complet de la déclaration UE de conformité est disponible à l'adresse internet suivante: <http://www.pioneer-car.eu/compliance>

Svenska:  
 Härmed försäkrar Pioneer att denna typ av radioustrustning [\*] överensstämmer med direktiv 2014/53/UE.  
 Den fullständiga texten till EU-försäkran om överensstämmelse finns på följande webbadress: <http://www.pioneer-car.eu/compliance>

Dansk:  
 Hermed erklærer Pioneer, at radioustyrstypen [\*] er i overensstemmelse med direktiv 2014/53/UE.  
 EU-overensstemmelseserklæringens fulde tekst kan findes på følgende internetadresse: <http://www.pioneer-car.eu/compliance>

Deutsch:  
 Hiermit erkläre Pioneer, dass der Funkanlagentyp [\*] der Richtlinie 2014/53/UE entspricht.  
 Der vollständige Text der EU-Konformitätserklärung ist unter der folgenden Internetadresse verfügbar: <http://www.pioneer-car.eu/compliance>

Español:  
 Por la presente, Pioneer declara que el tipo de equipo radioeléctrico [\*] es conforme con la Directiva 2014/53/UE.  
 El texto completo de la declaración UE de conformidad está disponible en la dirección Internet siguiente: <http://www.pioneer-car.eu/compliance>

Português:  
 O(a) abaixo assinado(a) Pioneer declara que o presente tipo de equipamento de rádio [\*] está em conformidade com a Diretiva 2014/53/UE.  
 O texto integral da declaração de conformidade está disponível no seguinte endereço de Internet: <http://www.pioneer-car.eu/compliance>

Čeština:  
 Tímto Pioneer prohlašuje, že typ rádiového zařízení [\*] je v souladu se směrnicí 2014/53/UE.  
 Úplné znění EU prohlášení o shodě je k dispozici na této internetové adrese: <http://www.pioneer-car.eu/compliance>

Eesti:  
 Käesolevaga deklareerib Pioneer, et käesolev raadioseadme tüüp [\*] vastab direktiivi 2014/53/EL nõuetele.  
 ELI vastavusdeklaratsiooni täielik tekst on kättesaadav järgmisel internetiaadressil: <http://www.pioneer-car.eu/compliance>

Magyar:  
 Pioneer igazolja, hogy a [\*] típusú rádióberendezés megfelelt a 2014/53/EU irányelvnek.  
 Az EU-megfelelőségi nyilatkozat teljes szövege elérhető a következő internetes címen: <http://www.pioneer-car.eu/compliance>

Latviešu valoda:  
 Ar šo Pioneer deklarā, ka radioiekārtā [\*] atbilst Direktīvai 2014/53/ES.  
 Pilns ES atbilstības deklarācijas teksts ir pieejams šādā interneta vietnē: <http://www.pioneer-car.eu/compliance>

Lietuvių kalba:  
 Aš, Pioneer, patvirtinu, kad radijo įrenginių tipas [\*] atitinka Direktyvą 2014/53/ES.  
 Visas ES atitikties deklaracijos tekstas prieinamas šiuo interneto adresu: <http://www.pioneer-car.eu/compliance>

Maltese:  
 B'dan, Pioneer, niddikjara li dan it-tip ta' tagħmir tar-radju [\*] huwa konformi mad-Direttiva 2014/53/UE.  
 It-test kollu tad-dikjarazzjoni ta' konformità tal-UE huwa disponibbli f'dan l-indirizz tal-Internet li ġejj: <http://www.pioneer-car.eu/compliance>

Slovenščina:  
 Pioneer týmto vyhlasuje, že rádiové zariadenie typu [\*] je v súlade so smernicou 2014/53/UE.  
 Úplné EU vyhlásenie o zhode je k dispozícii na tejto internetovej adrese: <http://www.pioneer-car.eu/compliance>

Italiano:  
 Il fabbricante, Pioneer, dichiara che il tipo di apparecchiatura radio [\*] è conforme alla direttiva 2014/53/UE.  
 Il testo completo della dichiarazione di conformità UE è disponibile al seguente indirizzo Internet: <http://www.pioneer-car.eu/compliance>

Türk:  
 Burada, Pioneer radyo ekipmanı turunun [\*] 2014/53/UE direktiflerine uyumlu olduğunu beyan eder.  
 Avrupa uyumluluk beyanının tam metni belirlenen internet sitesinde mevcuttur: <http://www.pioneer-car.eu/compliance>

Hrvatski:  
 Pioneer ovime izjavljuje da je radijska oprema tipa [\*] u skladu s Direktivom 2014/53/UE.  
 Cjeloviti tekst EU izjave o sukladnosti dostupan je na sljedećoj internetskoj adresi: <http://www.pioneer-car.eu/compliance>

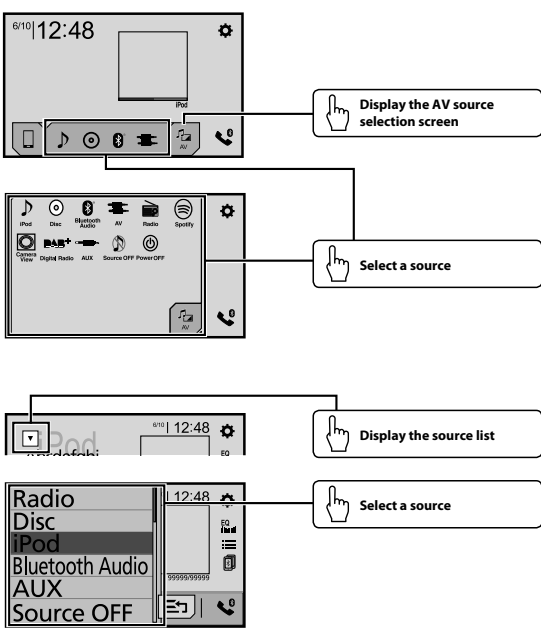
Polski:  
 Pioneer niniejszym oświadcza, że typ urządzenia radiowego [\*] jest zgodny z dyrektywą 2014/53/UE.  
 Pełny tekst deklaracji zgodności UE jest dostępny pod następującym adresem internetowym: <http://www.pioneer-car.eu/compliance>

Română:  
 Prin prezenta, Pioneer declară că tipul de echipamente radio [\*] este în conformitate cu Directiva 2014/53/UE.  
 Textul integral al declarației UE de conformitate este disponibil la următoarea adresă internet: <http://www.pioneer-car.eu/compliance>

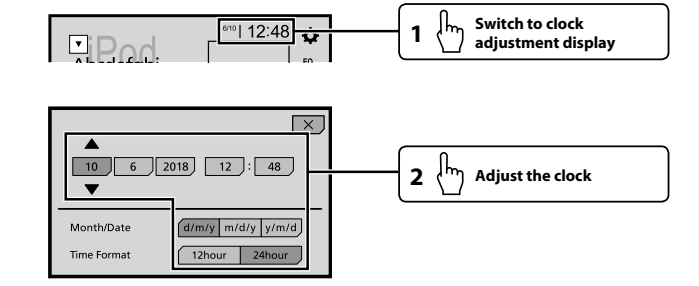
Bulgarski:  
 С настоящото Pioneer декларира, че този тип радиосъоръжение [\*] е в съответствие с Директива 2014/53/ЕС.  
 Цялостният текст на ЕС декларацията за съответствие може да се намери на следния интернет адрес: <http://www.pioneer-car.eu/compliance>

## Notepad / Bloc-notes / Appunti / Bloc de notas / Notepad / Notities

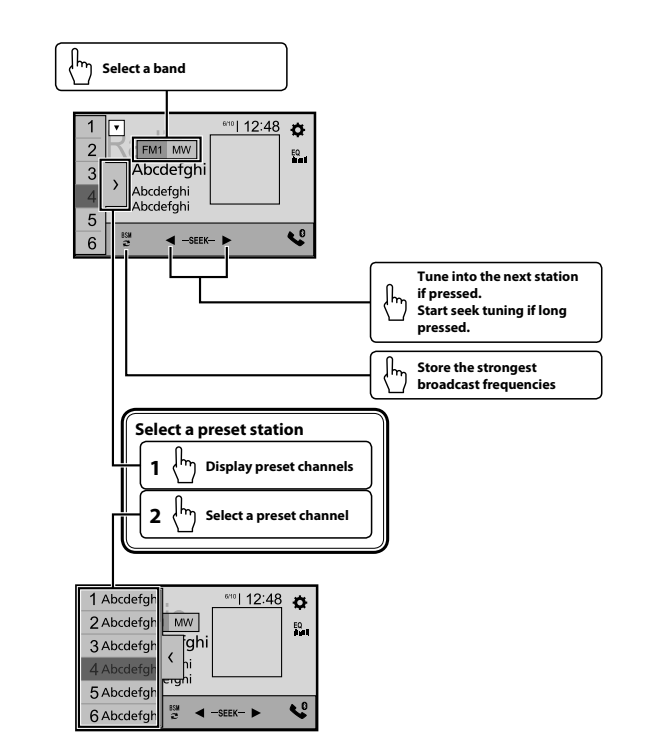
### Selecting the source



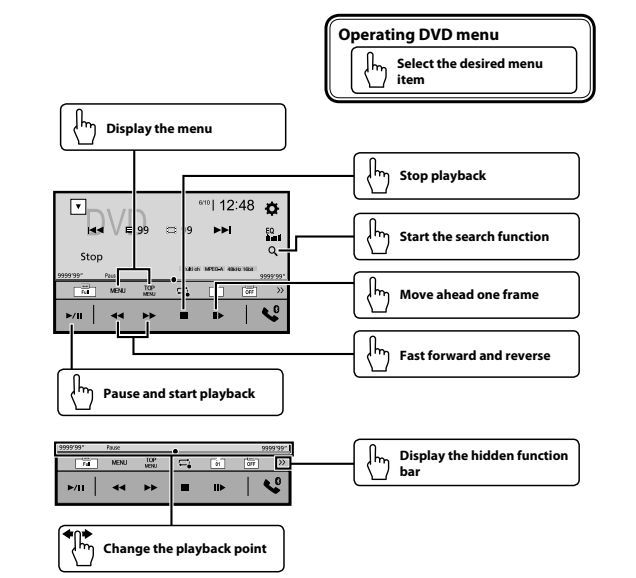
### Setting the clock



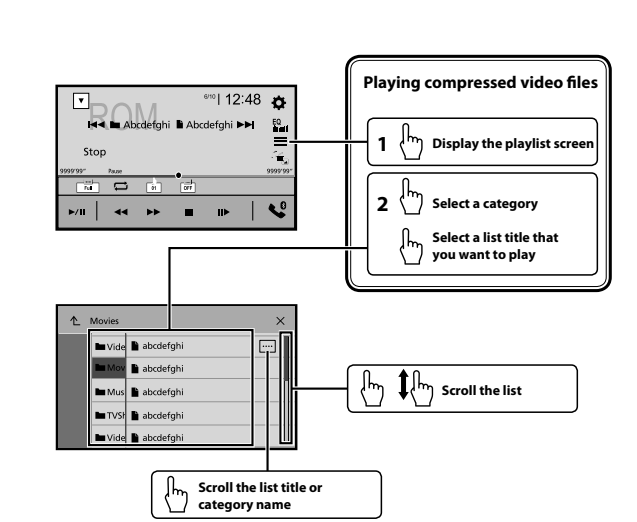
### Tuner operation



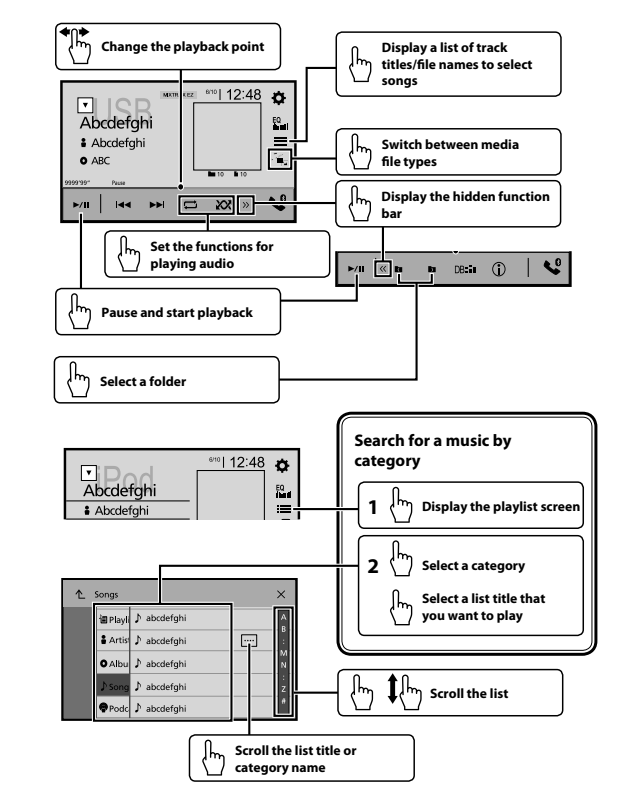
### Moving images operation



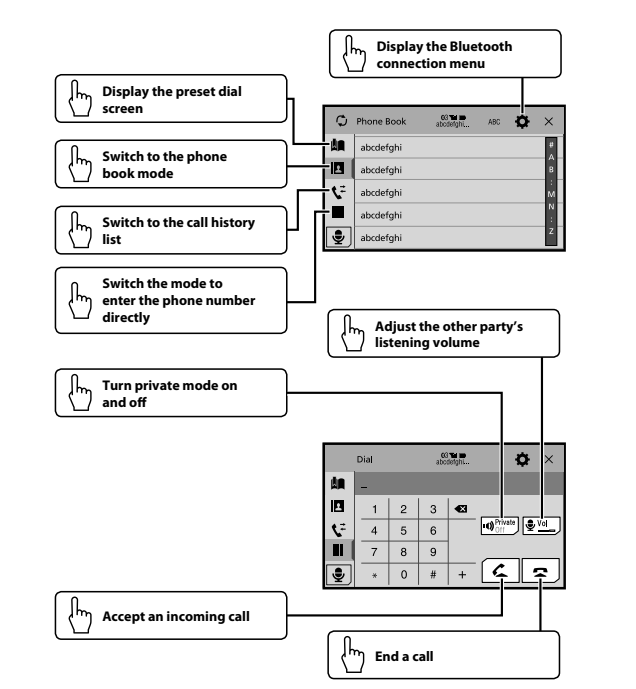
### Moving images operation



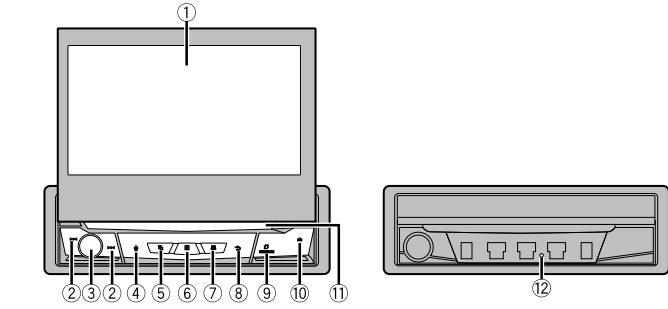
### Audio operation



### Bluetooth telephone operation



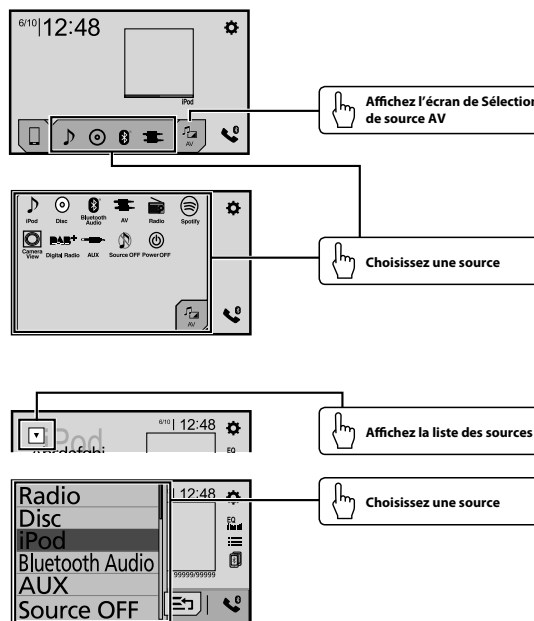
### What's What



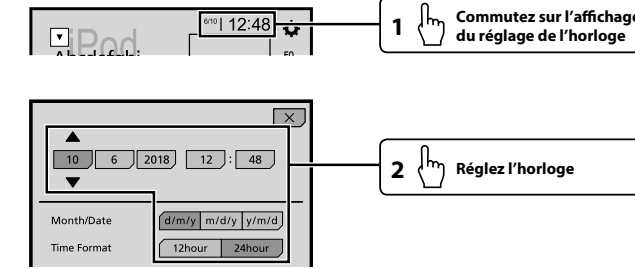
- 1 LCD screen
- 2 <<>>>> buttons  
Press to return to the previous track (chapter) or go to the next track (chapter). Press and hold to perform fast reverse or fast forward. Press to answer or end a call.
- 3 Volume/SRC/OFF  
Press to cycle through all the available sources. Press and hold to turn the source off.
- 4 <img alt="voice icon" data-bbox="885 555 895 565"/> button  
Press to activate the voice recognition mode such as Siri when iPhone is connected to the unit via Bluetooth or USB.
- 5 <img alt="camera icon" data-bbox="885 635 895 645"/> button  
Press to switch between the Application screen and the AV operation screen. Press and hold to switch to the camera view mode.
- 6 <img alt="grid icon" data-bbox="885 655 895 665"/> button  
Press to display the top menu screen. Press and hold to power off.
- 7 <img alt="list icon" data-bbox="885 715 895 725"/> button  
Press to display the menu bar. Press and hold to mute or unmute.
- 8 <img alt="back icon" data-bbox="885 765 895 775"/> button  
Press to display the top menu screen or back to previous screen. Press and hold to turn off the display.  
□ When the display is turned off, touch the screen to revert to the original screen.
- 9 OPEN/CLOSE button  
Press to open the LCD panel. To close the LCD panel, press again.
- 10 <img alt="up arrow icon" data-bbox="885 885 895 895"/> button
- 11 Disc-loading slot
- 12 RESET button

### Sélection de la source

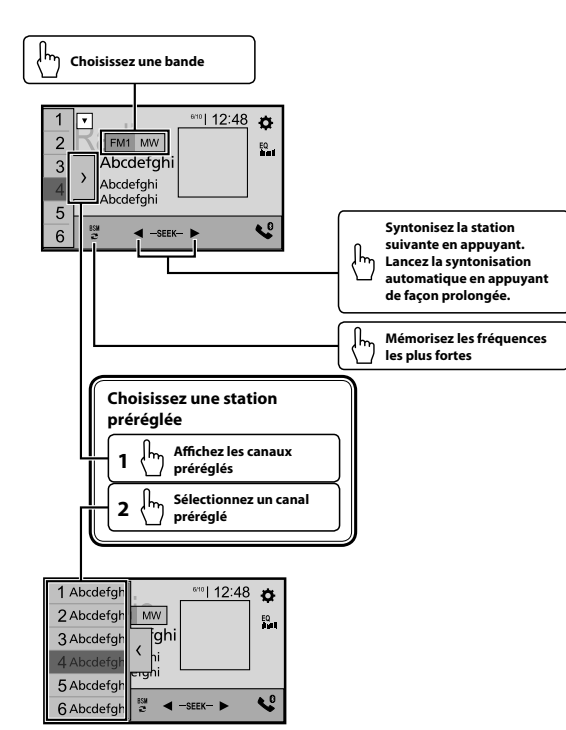
: Touchez : Touchez-glissez



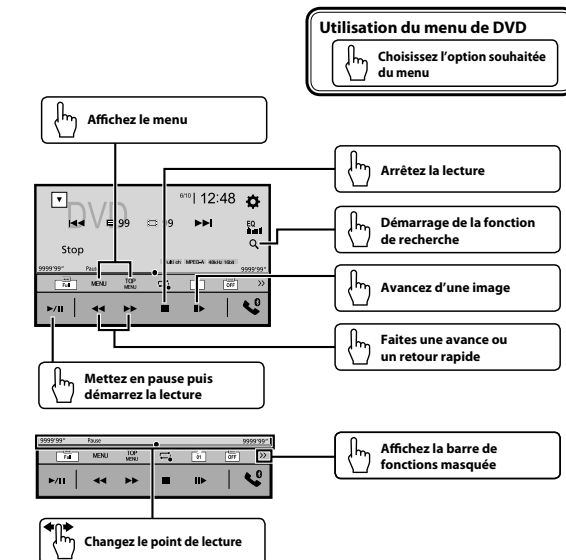
### Réglage de l'horloge



### Utilisation du tuner



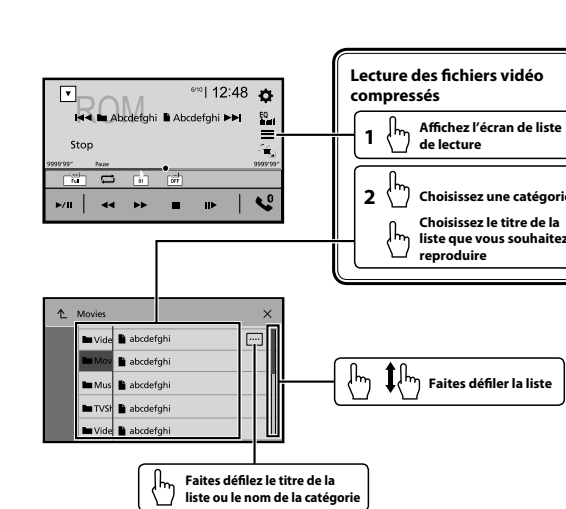
### Exploitation des images animées



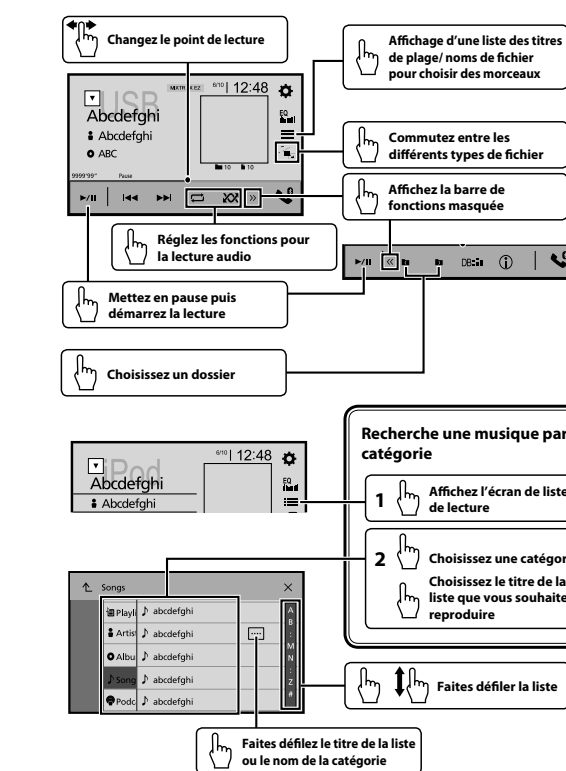
#### Utilisation du menu de DVD

Choisissez l'option souhaitée du menu

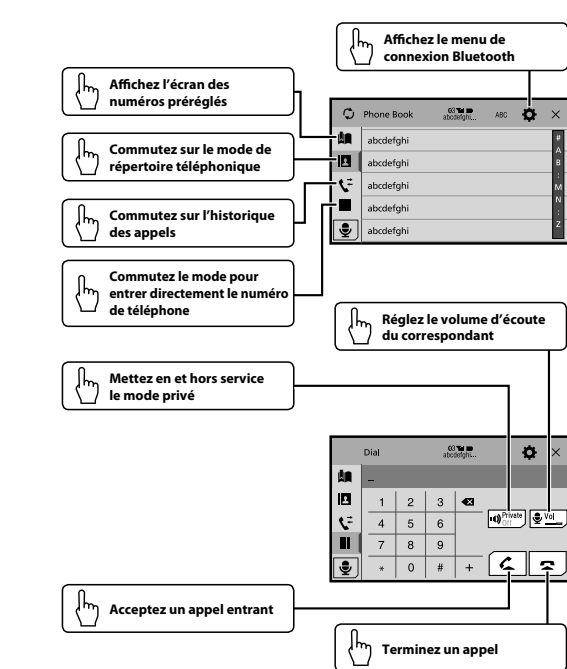
### Exploitation des images animées



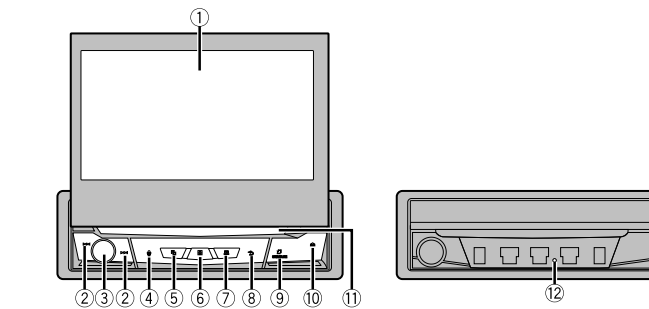
### Opérations audio



### Utilisation d'un téléphone Bluetooth



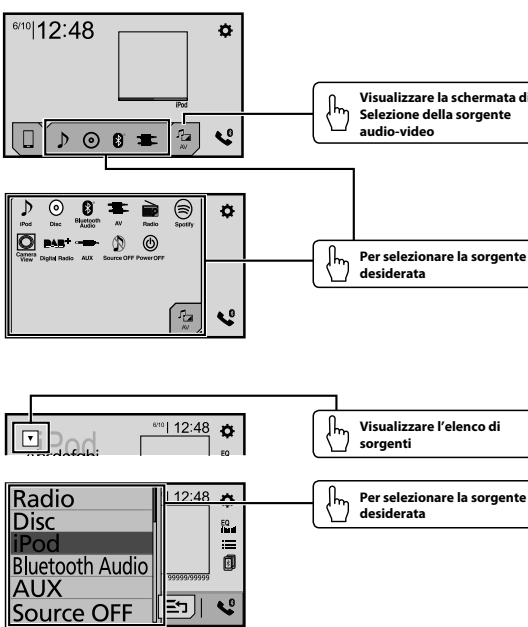
### Description de l'appareil



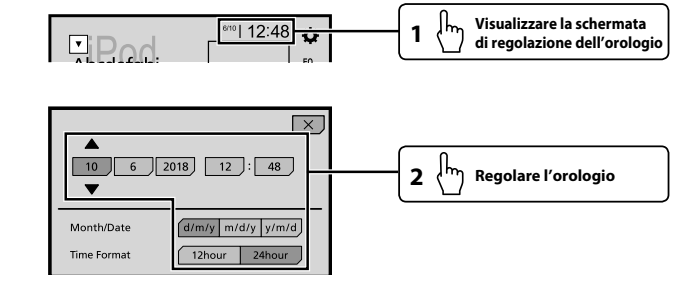
- 1 Écran LCD
- 2 Boutons



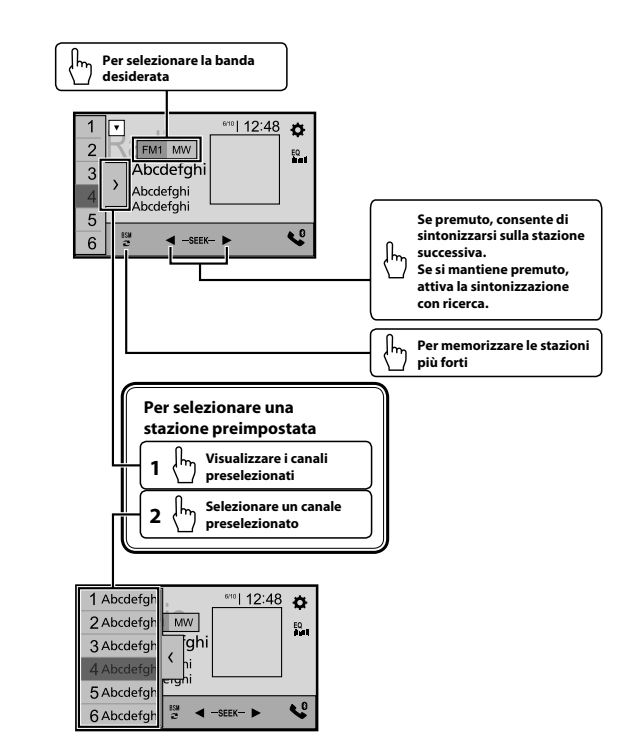
### Selezione della sorgente



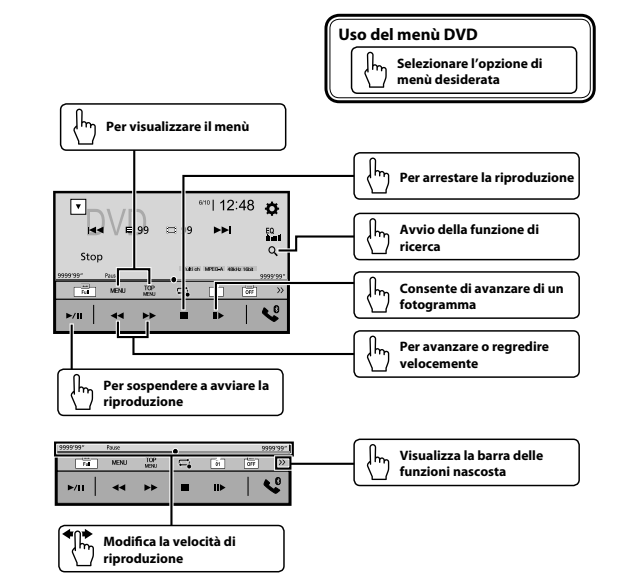
### Impostazione dell'orologio



### Uso del sintonizzatore

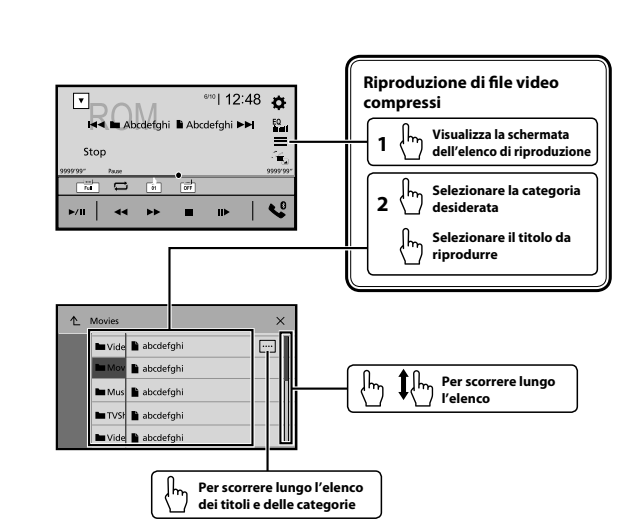


### Uso delle immagini video

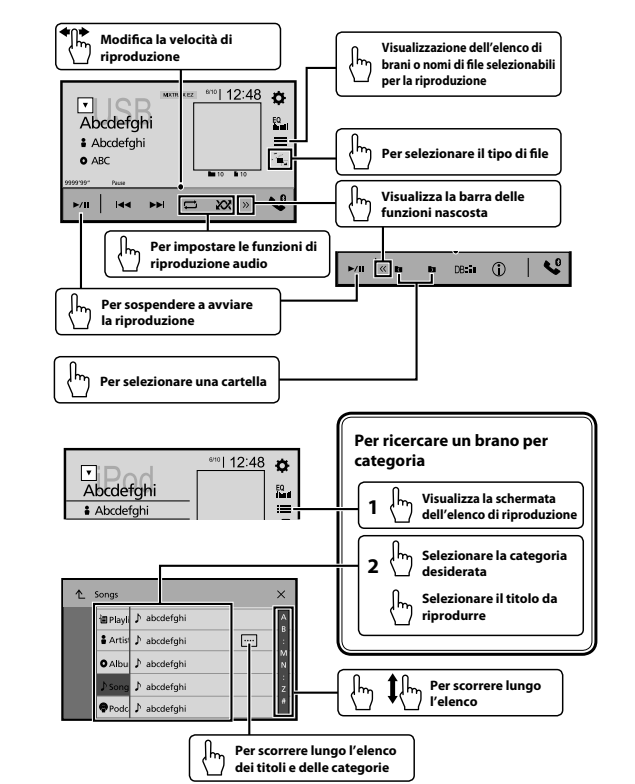


**Uso del menù DVD**  
Selezionare l'opzione di menù desiderata

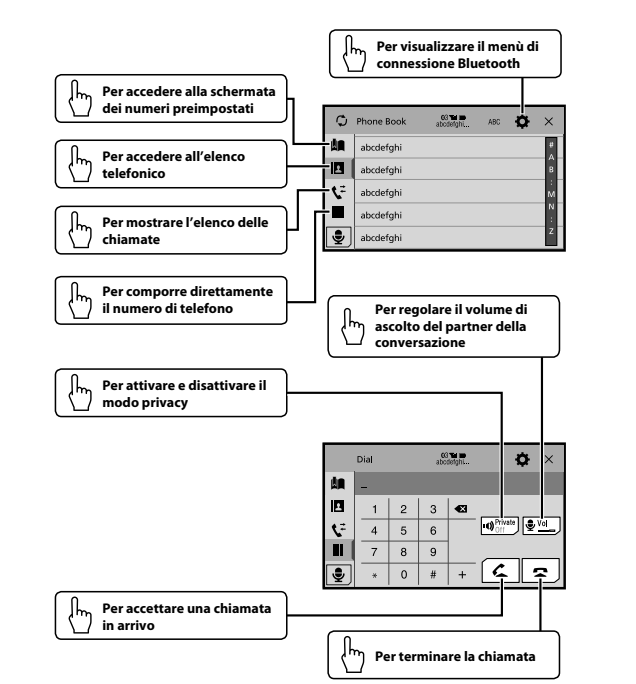
### Uso delle immagini video



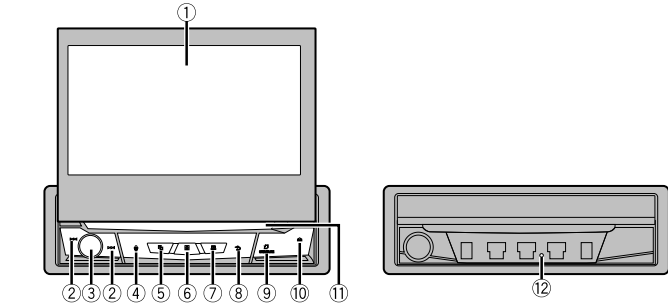
### Uso delle funzioni audio



### Uso del telefono Bluetooth



### Nomenclatura

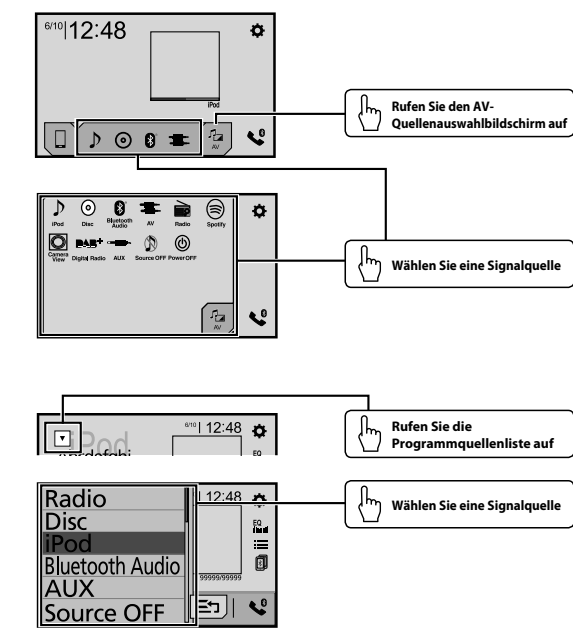


- 1 Schermo LCD
- 2 Pulsanti

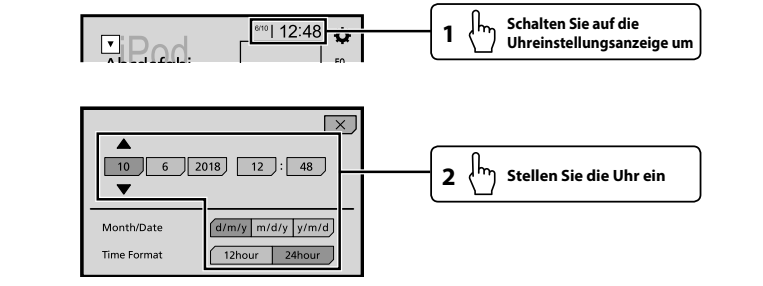


### Wahl der Signalquelle

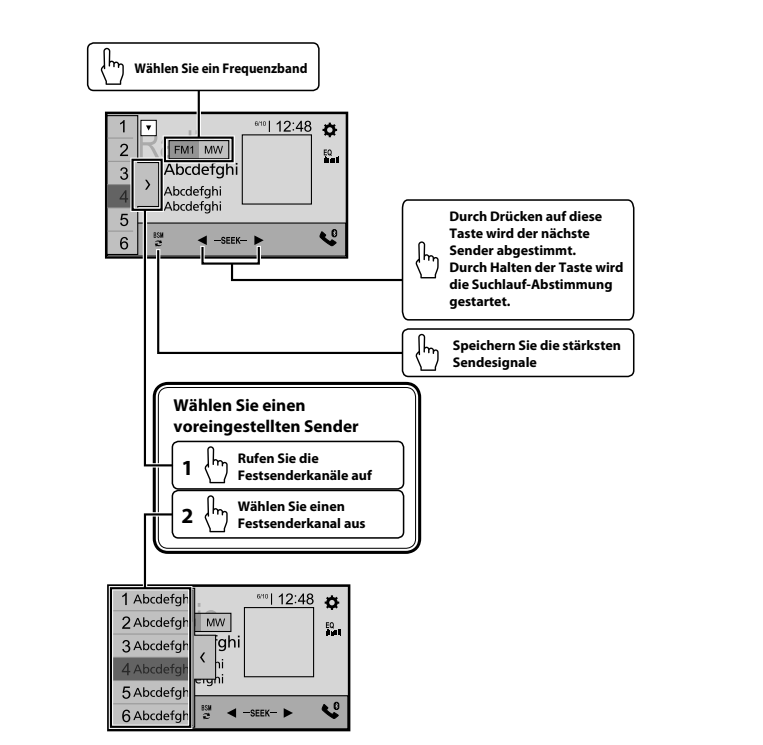
: Antippen : Antippen und schieben



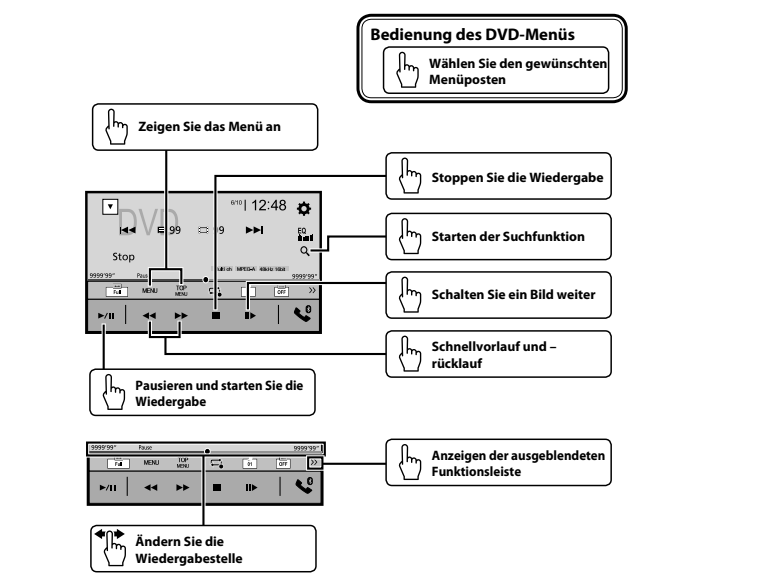
### Einstellen der Uhrzeit



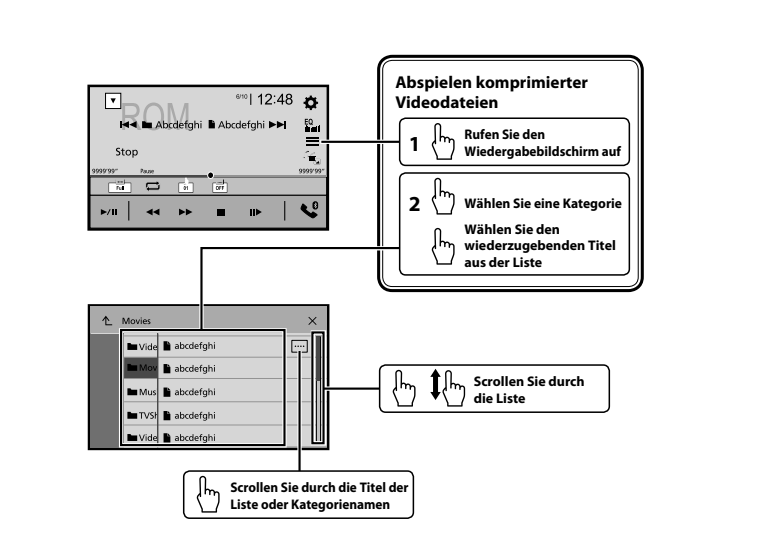
### Tuner-Betrieb



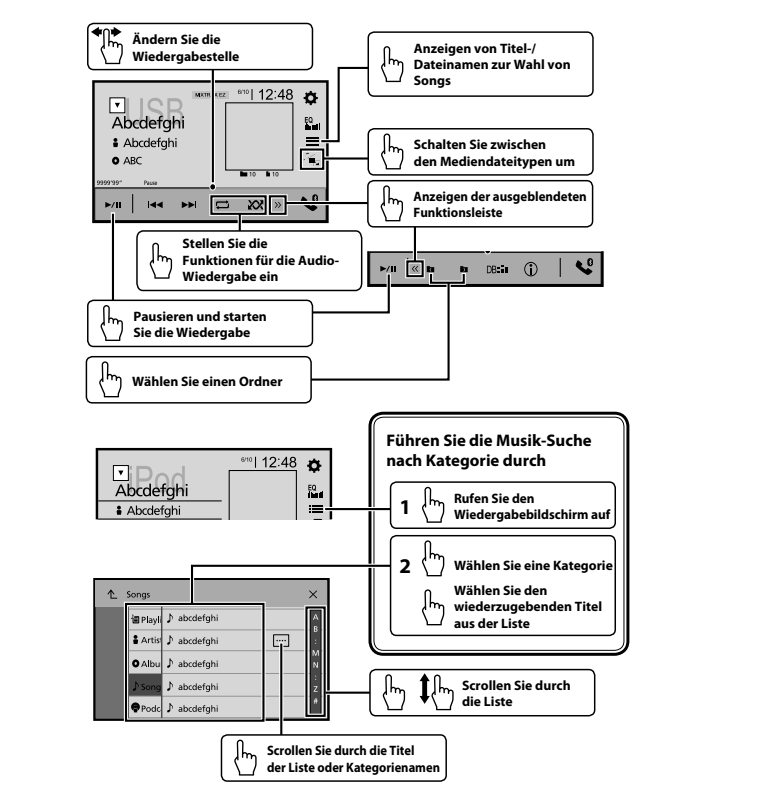
### Bewegbild-Betrieb



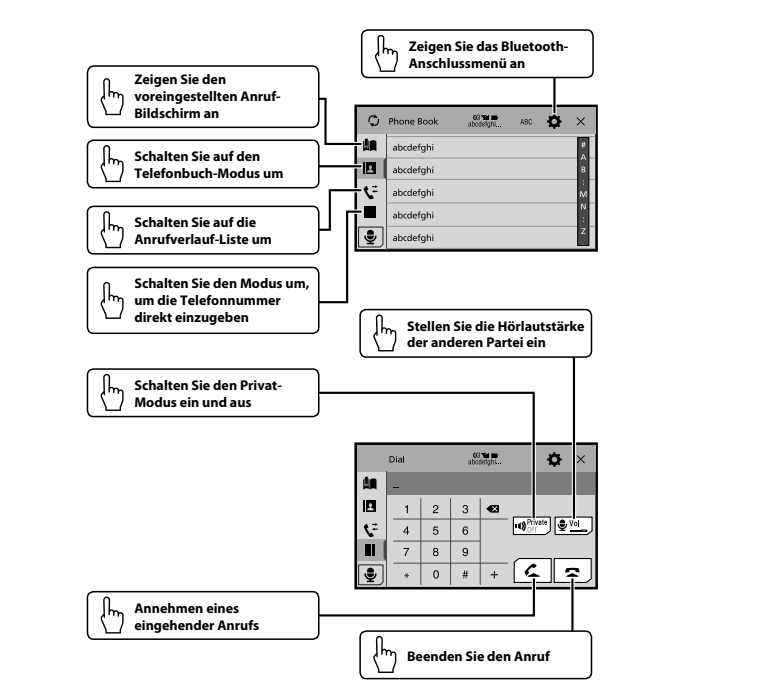
### Bewegbild-Betrieb



### Audio-Betrieb



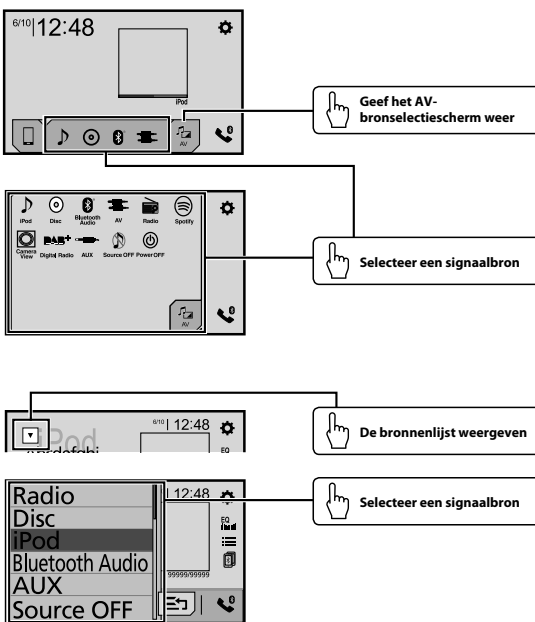
### Bluetooth-Telefonbetrieb



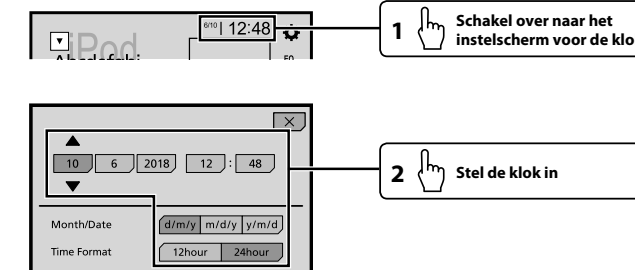
### Die einzelnen Teile



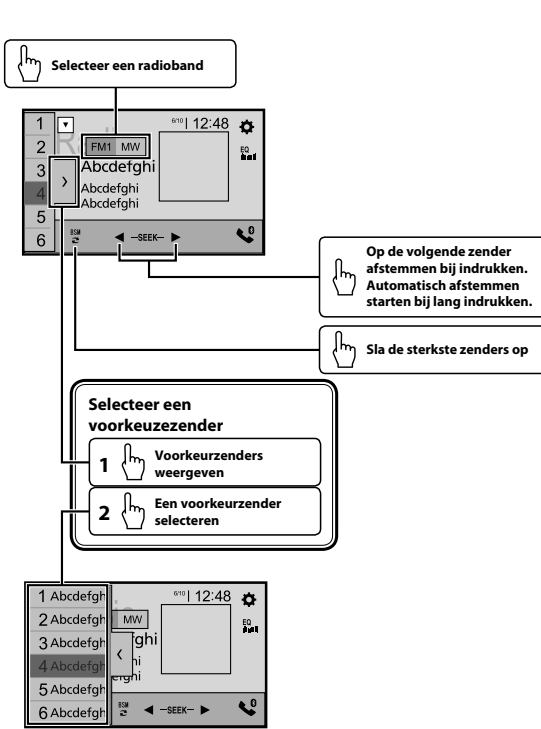
### Selecteren van de signaalbron



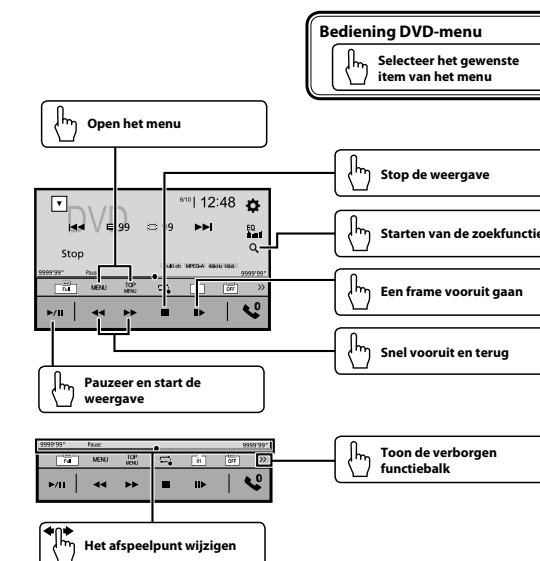
### De klok instellen



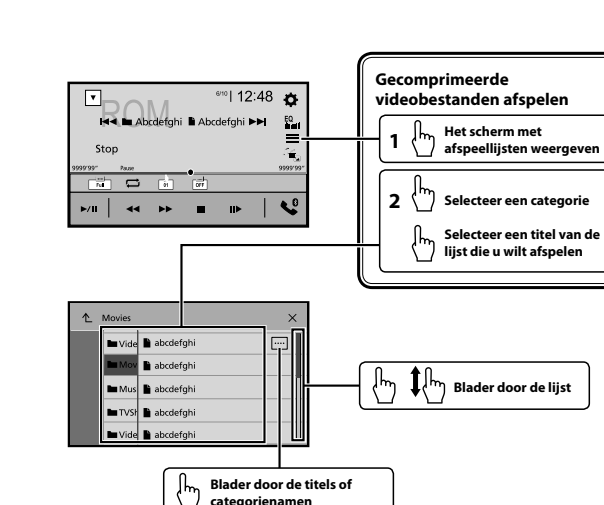
### Bediening van de tuner (radio)



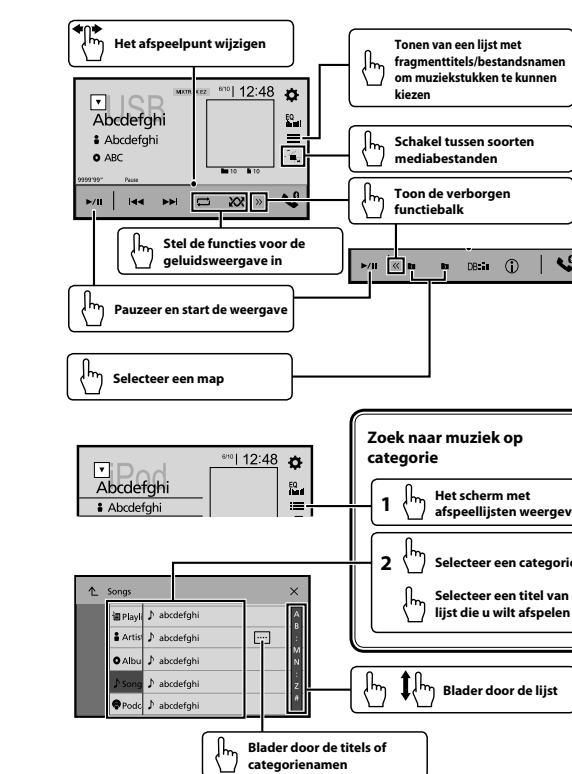
### Bediening bewegende beelden



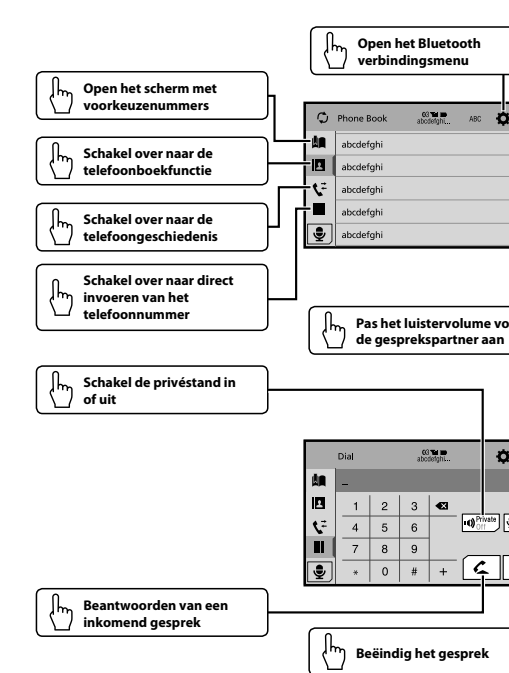
### Bediening bewegende beelden



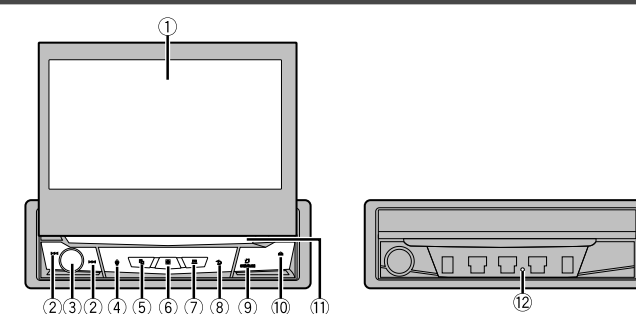
### Bediening audiofuncties



### Bediening Bluetooth telefoon



### Wat is wat



- 1 LCD-scherm
- 2 < << >> > >> -toetsen  
Druk op deze toets om terug te gaan naar het vorige nummer (hoofdstuk) of het volgende nummer (hoofdstuk).  
Houd deze toets ingedrukt om snel achteruit of vooruit te spelen.  
Druk hierop om een oproep te beantwoorden of te beëindigen.
- 3 Volume/SRC/OFF  
Druk hierop om te bladeren door alle beschikbare bronnen.  
Houd deze toets ingedrukt om de bron uit te schakelen.
- 4 <-toets  
Druk hierop om de spraakherkenning te activeren, zoals Siri wanneer een iPhone via Bluetooth of USB is aangesloten op het apparaat.
- 5 <-toets  
Druk hierop om over te schakelen tussen het applicatiescherm en het AV-bedieningsscherm.  
Houd ingedrukt om over te schakelen naar de cameraweergavemodus.
- 6 <-toets  
Druk hierop om het beginmenuscherm weer te geven.  
Houd ingedrukt om het apparaat uit te schakelen.
- 7 <-toets  
Druk hierop om de menubalk weer te geven.  
Houd ingedrukt om het geluid te dempen of weer te geven.
- 8 <-toets  
Druk hierop om het hoofdmenu weer te geven of om naar het vorige scherm terug te keren.  
Houd ingedrukt om het display uit te schakelen.  
□ Wanneer het display is uitgeschakeld, tikt u het scherm aan om terug te keren naar het originele scherm.
- 9 OPEN/CLOSE-toets  
Druk hierop om het LCD-paneel te openen.  
Druk hier opnieuw op om het LCD-paneel te sluiten.
- 10 <-toets
- 11 Disc-laadsleuf
- 12 RESET-toets

